

PYROBEL 19H HORIZONTAL

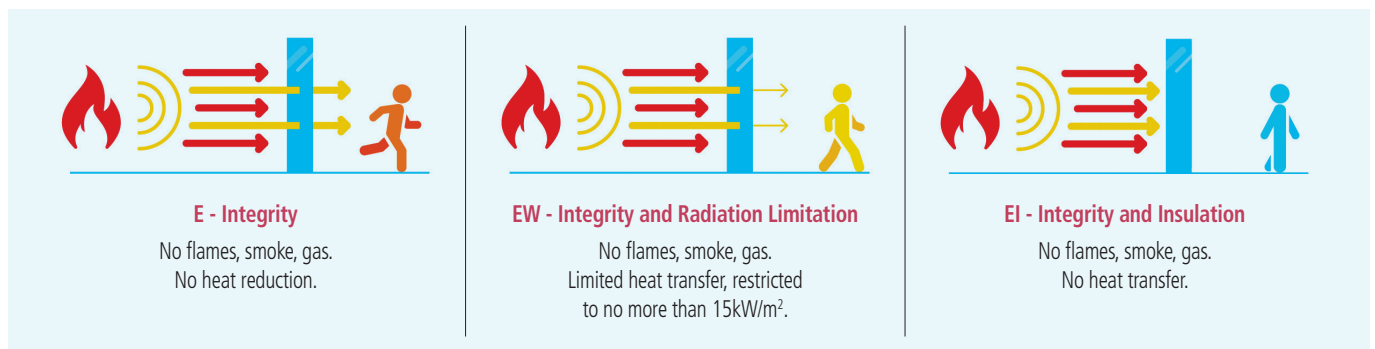
Fire-resistant glass focusing
on your safety



EW30/EI30

AGC

Pyrobel 19H is a laminated glass assembled with sheets of glass and fire-resistant clear intumescent interlayers. In the event of fire, the interlayers transform into rigid and opaque fire shields, that keep out flames, limit the heat transfer through the glazing and reduce strongly the temperature on the protected surface of the Pyrobel glass. Pyrobel 19H is designed to be applied in internal and external horizontal or sloped constructions and provide fire resistance according to EN 13501-2.



Technical data

Specification / Identification	Pyrobel 19H	Pyrobel 19H IGU
Glazing type	Single	Double (or triple) Glazing Unit
Grade	Internal, 1 side UV filter	External with UV filter
Glass Thickness	19,1 mm	Consult the Glass Configurator: www.agc-yourglass.com/ configurator
Thickness Tolerances	+/- 1,5 mm	
Dimensions tolerances	+/- 2 mm	
Weight	Ca 43 Kg/m ²	
Minimum dimensions	No minimum	
Light transmission / Light reflection (%)	85 / 8	
U value (EN 673)	5,2 W/(m ² .K)	
Impact resistance (EN 12600)	1B1	
Sound reduction (EN 12758) Rw (C; Ctr)	38 (-1; -3) dB	
Exposure temperatures	-40°C / +50°C	

Fire certification

Check out the product selector for availabilities of fire certification on www.agc-pyrobel.com/selector.
The installation must be done in compliance with the fire test report.

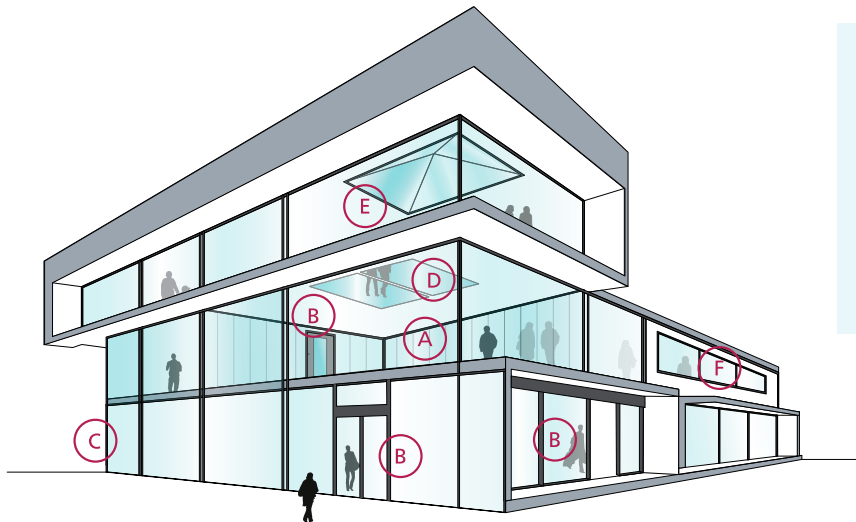
Availability

- SGU** Single glazing unit for internal application
- IGU** Insulated glazing unit for outdoor applications (double or triple glazing)

SPS Special products and combinations such as bulletproof and burglar resistant glass

Applications

The Pyrobel product range has been tested in a large variety of aluminium, steel, wood & butt-joint systems:



- A** Fire-resistant all-glass partitions
- B** Fire-resistant glazed doors
- C** Fire-resistant curtain walls - facades
- D** Fire-resistant floor glazing
- E** Fire-resistant roof glazing
- F** Fire resistant windows

Why choose Pyrobel(ite)?



THE SHORTEST DELIVERY TIMES

Since Pyrobel(ite) **can be cut** by our network of distributors, they can supply you with what you need **quickly and efficiently**.



ACOUSTIC INSULATION

Pyrobel(ite) has excellent **acoustic insulation properties**.



CRADLE TO CRADLE CERTIFIED

Pyrobel(ite) is **Cradle to Cradle Certified™ Silver**.



QUALITY

With 40 years of experience, Pyrobel delivers proven long-term quality. Pyrobel(ite) glass has an excellent optical quality supported by a **10-year warranty**.



PROVIDING SOLUTIONS

We support our customers **with our high-level expertise**.



MADE IN EUROPE



The information and data contained in this document are subject to change without notice.

Questions? Contact our sales team! www.agc-pyrobel.com/contact



PYROBEL 23H

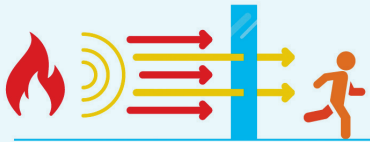
EI30/EI45

AGC

Fire-resistant glass focusing on your safety

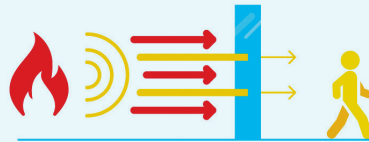


Pyrobel 23H is a laminated glass assembled with sheets of glass and fire-resistant clear intumescent interlayers. In the event of fire, the interlayers transform into rigid and opaque fire shields, that keep out flames, limit the heat transfer through the glazing and reduce strongly the temperature on the protected surface of the Pyrobel glass. Pyrobel 23H is designed to be applied in internal and external horizontal or sloped constructions and provide fire-resistance according to EN 13501-2.



E - Integrity

No flames, smoke, gas.
No heat reduction.



EW - Integrity and Radiation Limitation

No flames, smoke, gas.
Limited heat transfer, restricted to no more than 15kW/m².



EI - Integrity and Insulation

No flames, smoke, gas.
No heat transfer.

Technical data

Specification / Identification	Pyrobel 23H	Pyrobel 23H IGU
Glazing type	Single	Double (or triple) Glazing Unit
Grade	Internal, 1 side UV filter	External with UV filter
Glass Thickness	23,7 mm	Consult the Glass Configurator: www.agc-yourglass.com/configurator
Thickness Tolerances	+/- 1,8 mm	
Dimensions tolerances	+/- 2 mm	
Weight	Ca 54 Kg/m ²	
Minimum dimensions	No minimum	
Light transmission / Light reflection (%)	83 / 8	
U value (EN 673)	5,1 W/(m ² .K)	
Impact resistance (EN 12600)	1B1	
Sound reduction (EN 12758) Rw(C;Ctr)	39 (0 ; -3) dB	
Exposure temperatures	-40°C / +50°C	

Fire certification

Check out the product selector for availabilities of fire certification on www.agc-pyrobel.com/selector.
The installation must be done in compliance with the fire test report.

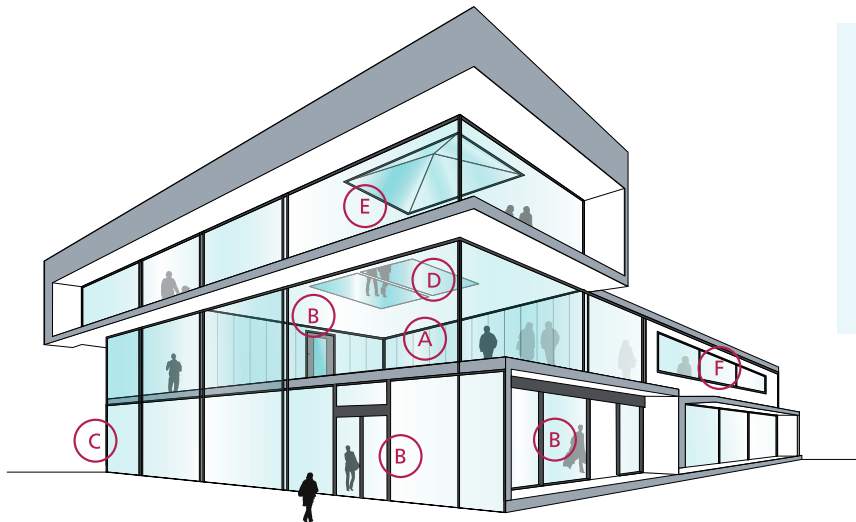
Availability

- SGU** Single glazing unit for internal application
- IGU** Insulated glazing unit for outdoor applications (double or triple glazing)

SPS Special products and combinations such as bulletproof and burglar resistant glass

Applications

The Pyrobel product range has been tested in a large variety of aluminium, steel, wood & butt-joint systems:



- A** Fire-resistant all-glass partitions
- B** Fire-resistant glazed doors
- C** Fire-resistant curtain walls - facades
- D** Fire-resistant floor glazing
- E** Fire-resistant roof glazing
- F** Fire resistant windows

Why choose Pyrobel(ite)?



THE SHORTEST DELIVERY TIMES

Since Pyrobel(ite) **can be cut** by our network of distributors, they can supply you with what you need **quickly and efficiently**.



ACOUSTIC INSULATION

Pyrobel(ite) has excellent **acoustic insulation properties**.



CRADLE TO CRADLE CERTIFIED

Pyrobel(ite) is **Cradle to Cradle Certified™ Silver**.



QUALITY

With 40 years of experience, Pyrobel delivers proven long-term quality. Pyrobel(ite) glass has an excellent optical quality supported by a **10-year warranty**.



PROVIDING SOLUTIONS

We support our customers **with our high-level expertise**.



MADE IN EUROPE



The information and data contained in this document are subject to change without notice.

Questions? Contact our sales team! www.agc-pyrobel.com/contact



PYROBEL 28H HORIZONTAL

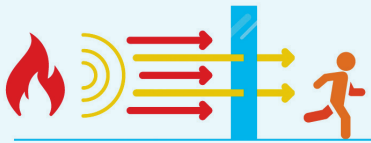
Fire-resistant glass focusing
on your safety



E60/EI60

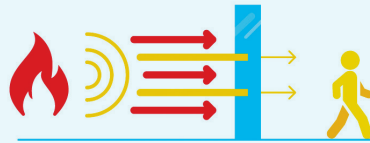
AGC

Pyrobel 28H is a laminated glass assembled with sheets of glass and fire-resistant clear intumescent interlayers. In the event of fire, the interlayers transform into rigid and opaque fire shields, that keep out flames, limit the heat transfer through the glazing and reduce strongly the temperature on the protected surface of the Pyrobel glass. Pyrobel 28H is designed to be applied in internal and external horizontal or sloped constructions and provide fire-resistance according to EN 13501-2.



E - Integrity

No flames, smoke, gas.
No heat reduction.



EW - Integrity and Radiation Limitation

No flames, smoke, gas.
Limited heat transfer, restricted
to no more than 15kW/m².



EI - Integrity and Insulation

No flames, smoke, gas.
No heat transfer.

Technical data

Specification / Identification	Pyrobel 28H	Pyrobel 28H IGU
Glazing type	Single	Double (or triple) Glazing Unit
Grade	Internal, 1 side UV filter	External with UV filter
Glass Thickness	28,4 mm	Consult the Glass Configurator: www.agc-yourglass.com/ configurator
Thickness Tolerances	+/- 2 mm	
Dimensions tolerances	+/- 2 mm	
Weight	Ca 63 Kg/m ²	
Minimum dimensions	No minimum	
Light transmission / Light reflection (%)	78 / 7	
U value (EN 673)	5,0 W/(m ² .K)	
Impact resistance (EN 12600)	1B1	
Sound reduction (EN 12758) Rw(C; Ctr)	41 (0 ; -3) dB	
Exposure temperatures	-40°C / +50°C	

Fire certification

Check out the product selector for availabilities of fire certification on www.agc-pyrobel.com/selector.
The installation must be done in compliance with the fire test report.

 **PYROBEL**

Your Dreams, Our Challenge

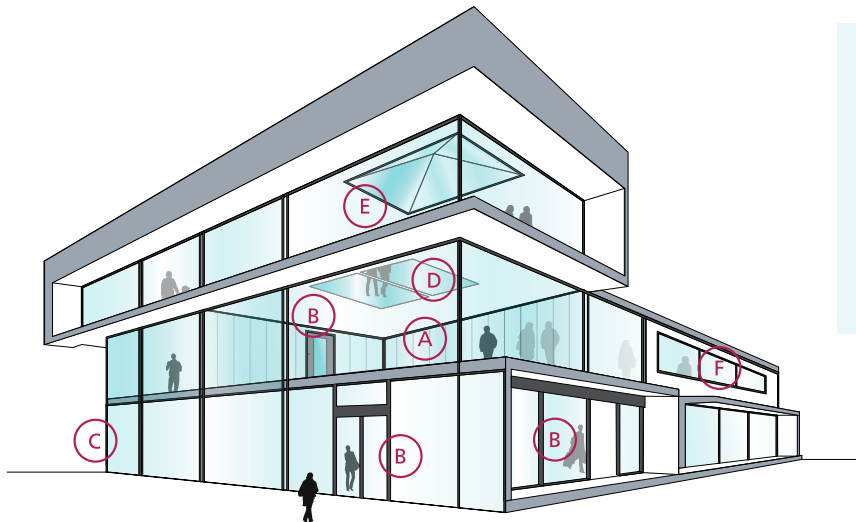
Availability

- SGU** Single glazing unit for internal application
- IGU** Insulated glazing unit for outdoor applications (double or triple glazing)

SPS Special products and combinations such as bulletproof and burglar resistant glass

Applications

The Pyrobel product range has been tested in a large variety of aluminium, steel, wood & butt-joint systems:



- A** Fire-resistant all-glass partitions
- B** Fire-resistant glazed doors
- C** Fire-resistant curtain walls - facades
- D** Fire-resistant floor glazing
- E** Fire-resistant roof glazing
- F** Fire resistant windows

Why choose Pyrobel(ite)?



THE SHORTEST DELIVERY TIMES

Since Pyrobel(ite) **can be cut** by our network of distributors, they can supply you with what you need **quickly and efficiently**.



ACOUSTIC INSULATION

Pyrobel(ite) has excellent **acoustic insulation properties**.



CRADLE TO CRADLE CERTIFIED

Pyrobel(ite) is **Cradle to Cradle Certified™ Silver**.



QUALITY

With 40 years of experience, Pyrobel delivers proven long-term quality. Pyrobel(ite) glass has an excellent optical quality supported by a **10-year warranty**.



PROVIDING SOLUTIONS

We support our customers **with our high-level expertise**.



MADE IN EUROPE



The information and data contained in this document are subject to change without notice.

Questions? Contact our sales team! www.agc-pyrobel.com/contact



PYROBEL 33H HORIZONTAL

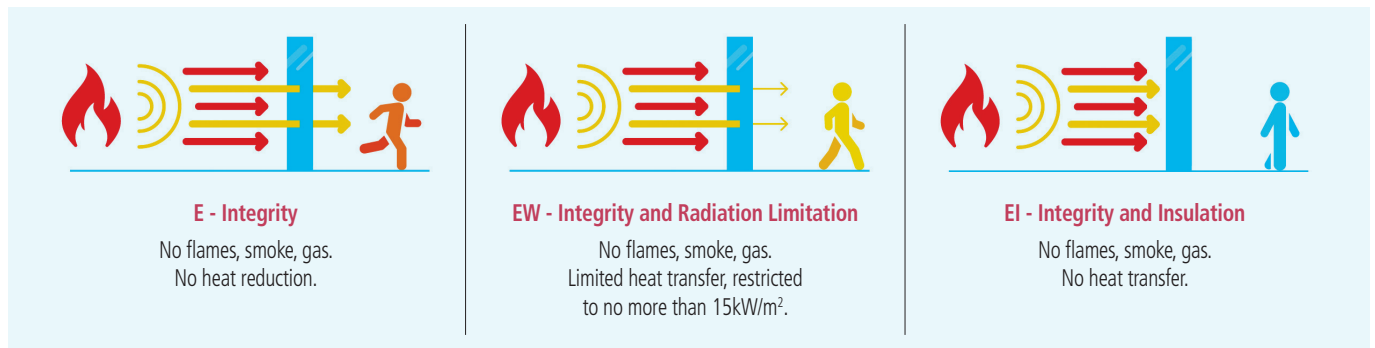
Fire-resistant glass focusing
on your safety



EI60

AGC

Pyrobel 33H is a laminated glass assembled with sheets of glass and fire-resistant clear intumescent interlayers. In the event of fire, the interlayers transform into rigid and opaque fire shields, that keep out flames, limit the heat transfer through the glazing and reduce strongly the temperature on the protected surface of the Pyrobel glass. Pyrobel 33H is designed to be applied in internal and external horizontal or sloped constructions and provide fire-resistance according to EN 13501-2.



Technical data

Specification / Identification	Pyrobel 33H	Pyrobel 33H IGU
Glazing type	Single	Double (or triple) Glazing Unit
Grade	Internal, 1 side UV filter	External with UV filter
Glass Thickness	33,2 mm	Consult the Glass Configurator: www.agc-younglass.com/ configurator
Thickness Tolerances	+/- 2,5 mm	
Dimensions tolerances	+/- 2 mm	
Weight	Ca 77 Kg/m ²	
Minimum dimensions	No minimum	
Light transmission / Light reflection (%)	80 / 7	
U value (EN 673)	4,9 W/(m ² .K)	
Impact resistance (EN 12600)	1B1	
Burglar resistance (EN 356)	P2A	
Sound reduction (EN 12758) Rw(C; Ctr)	44 (-1 ; -4) dB	
Exposure temperatures	-40°C / +50°C	

Fire certification

Check out the product selector for availabilities of fire certification on www.agc-pyrobel.com/selector.
The installation must be done in compliance with the fire test report.

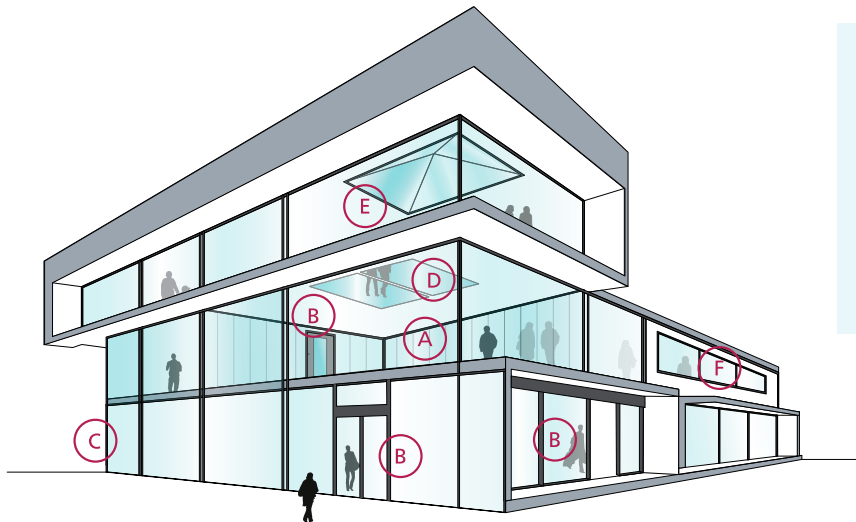
Availability

- SGU** Single glazing unit for internal application
- IGU** Insulated glazing unit for outdoor applications (double or triple glazing)

SPS Special products and combinations such as bulletproof and burglar resistant glass

Applications

The Pyrobel product range has been tested in a large variety of aluminium, steel, wood & butt-joint systems:



- A** Fire-resistant all-glass partitions
- B** Fire-resistant glazed doors
- C** Fire-resistant curtain walls - facades
- D** Fire-resistant floor glazing
- E** Fire-resistant roof glazing
- F** Fire resistant windows

Why choose Pyrobel(ite)?



THE SHORTEST DELIVERY TIMES

Since Pyrobel(ite) **can be cut** by our network of distributors, they can supply you with what you need **quickly and efficiently**.



ACOUSTIC INSULATION

Pyrobel(ite) has excellent **acoustic insulation properties**.



CRADLE TO CRADLE CERTIFIED

Pyrobel(ite) is **Cradle to Cradle Certified™ Silver**.



QUALITY

With 40 years of experience, Pyrobel delivers proven long-term quality. Pyrobel(ite) glass has an excellent optical quality supported by a **10-year warranty**.



PROVIDING SOLUTIONS

We support our customers **with our high-level expertise**.



MADE IN EUROPE



The information and data contained in this document are subject to change without notice.

Questions? Contact our sales team! www.agc-pyrobel.com/contact

