

# PYROBEL-T

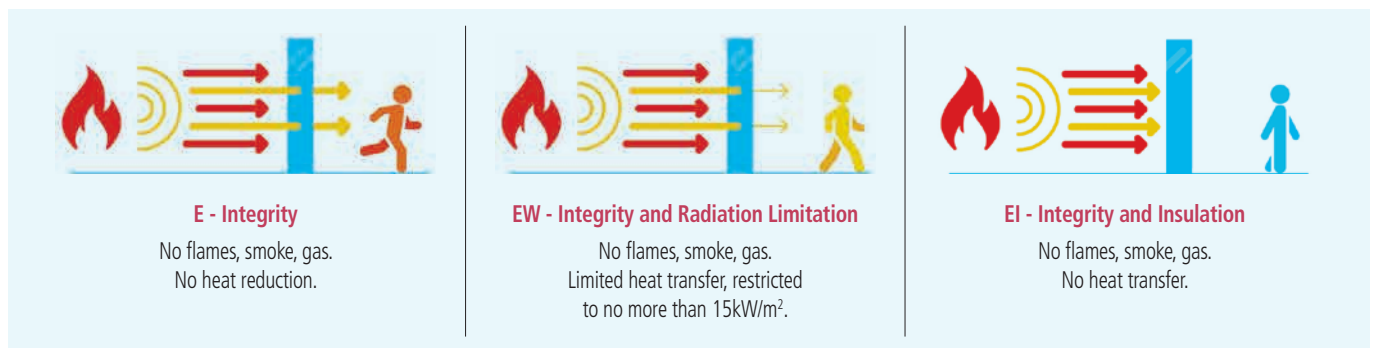
EW30

AGC

Fire-resistant glass focusing  
on your safety



**Pyrobel -T EW30** is an assembly of toughened sheets of glass, combined with fire-resistant clear intumescent interlayer(s). In the event of fire, the interlayer(s) transform into rigid and opaque fire shield(s), that keep out flames and limit the heat transmission through the glazing. Pyrobel-T is a technology for XXL fire-resistant glass up to 4,5m high. The glass delivers fire protection in both directions according to the standard EN 13501-2.



## Technical data

Specification / Identification	Pyrobel-T EW30-16	Pyrobel-T EW30-20	Pyrobel-T EW30 IGU
Glazing type	Single	Single	Double (or triple) Glazing Unit
Grade	Internal, UV resistant	Internal, UV resistant	External, UV resistant
Glass thickness	16,0 mm	20,0 mm	Consult the Glass Configurator: <a href="http://www.agc-younglass.com/configurator">www.agc-younglass.com/ configurator</a>
Thickness tolerances	± 1,0 mm	± 1,2 mm	
Dimensions tolerances	± 2 mm	± 2 mm	
Weight	ca 36 kg/m <sup>2</sup>	ca 46 kg/m <sup>2</sup>	
Max dimensions	2,0 x 4,5 m	2,0 x 4,5 m	
Minimum dimensions	0,2 x 0,35 m	0,2 x 0,35 m	
Light transmission / Light reflection (%)	87 / 8	86 / 8	
U value (EN 673)	5,4 W/(m <sup>2</sup> .K)	5,3 W/(m <sup>2</sup> .K)	
Impact resistance (EN 12600)	1B1	1B1	
Sound reduction (EN 12758) Rw (C; Ctr)	37 (-1; -2) dB	37 (-1; -3) dB	
Exposure temperatures	-10°C / + 50°C		

## Fire certification

Check out the product selector for availabilities of fire certification on [www.agc-pyrobel.com/selector](http://www.agc-pyrobel.com/selector).  
The installation must be done in compliance with the fire test report.

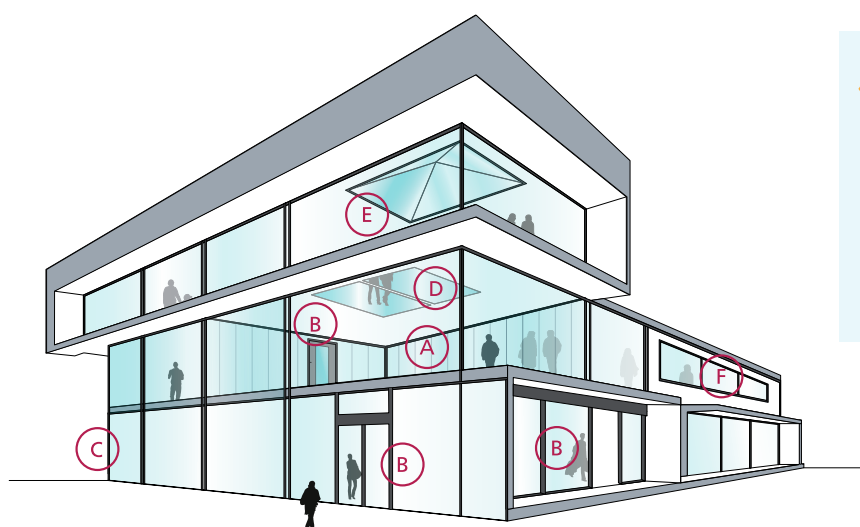
## Availability

- SGU** Single glazing unit for internal application
- IGU** Insulated glazing unit for outdoor applications (double or triple glazing)
- SPS** Special products and combinations such as bulletproof and burglar resistant glass

**VL** Vision Line which is an all-glass butt-joint glazing system without mullions. Separate technical data sheets are available for this range of products

## Applications

The Pyrobel-T product range has been tested in a large variety of aluminium, steel, wood & butt-joint systems:



- A** Fire-resistant all-glass partitions
- B** Fire-resistant glazed doors
- C** Fire-resistant curtain walls - facades
- D** Fire-resistant floor glazing
- E** Fire-resistant roof glazing
- F** Fire resistant windows

## Why choose Pyrobel-T?



### XXL SIZE

The fire-resistant Pyrobel-T glass can be delivered in **very large sizes**.



### RESISTANT

In addition to its excellent fire resistance performance, **Pyrobel-T provides resistance to impacts, water and UV rays**.



### HEAT SOAK TEST AVAILABLE ON REQUEST

Many spontaneous breakages of tempered glass are caused by nickel sulphide inclusions (NiS). The Heat Soak Test (HST) **excludes panes likely to suffer breakages**. This test is available on request.



### SUPERB TRANSPARENCY

Pyrobel-T glasses have an **exceptional light transmission**.



### PROVIDING SOLUTIONS

We support our customers **with our high-level expertise**.



### MADE IN EUROPE



The information and data contained in this document are subject to change without notice.

Questions? Contact our sales team! [www.agc-pyrobel.com/contact](http://www.agc-pyrobel.com/contact)



# PYROBEL-T

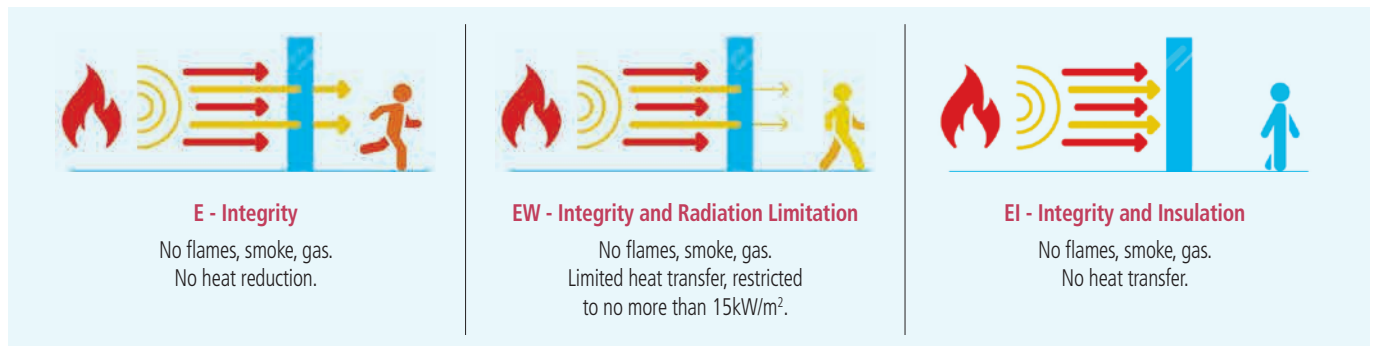
EW60

AGC

Fire-resistant glass focusing  
on your safety



**Pyrobel -T EW60** is an assembly of toughened sheets of glass, combined with fire-resistant clear intumescent interlayer(s). In the event of fire, the interlayer(s) transform into rigid and opaque fire shield(s), that keep out flames and limit the heat transmission through the glazing. Pyrobel-T is a technology for XXL fire-resistant glass up to 4,5m high. The glass delivers fire protection in both directions according to the standard EN 13501-2.



## Technical data

Specification / Identification	Pyrobel-T EW60-16	Pyrobel-T EW60-20
Glazing type	Single	Single
Grade	Internal, UV resistant	Internal, UV resistant
Glass thickness	16,0 mm	20,0 mm
Thickness tolerances	± 1,0 mm	± 1,2 mm
Dimensions tolerances	± 2 mm	± 2 mm
Weight	ca 36 kg/m <sup>2</sup>	ca 46 kg/m <sup>2</sup>
Max dimensions	2,0 x 4,5 m	2,0 x 4,5 m
Minimum dimensions	0,2 x 0,35 m	0,2 x 0,35 m
Light transmission / Light reflection (%)	87 / 8	86 / 8
U value (EN 673)	5,4 W/(m <sup>2</sup> .K)	5,3 W/(m <sup>2</sup> .K)
Impact resistance (EN 12600)	1B1	1B1
Sound reduction (EN 12758) Rw (C; Ctr)	37 (-1; -2) dB	37 (-1; -3) dB
Exposure temperatures	-10°C / +50°C	

## Fire certification

Check out the product selector for availabilities of fire certification on [www.agc-pyrobel.com/selector](http://www.agc-pyrobel.com/selector).  
The installation must be done in compliance with the fire test report.

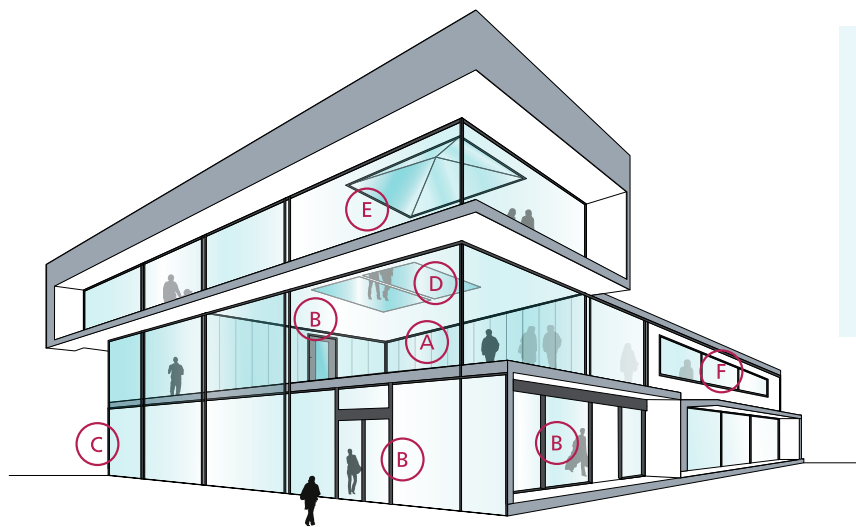
## Availability

- SGU** Single glazing unit for internal application
- IGU** Insulated glazing unit for outdoor applications (double or triple glazing)
- SPS** Special products and combinations such as bulletproof and burglar resistant glass

**VL** Vision Line which is an all-glass butt-joint glazing system without mullions. Separate technical data sheets are available for this range of products

## Applications

The Pyrobel-T product range has been tested in a large variety of aluminium, steel, wood & butt-joint systems:



- A Fire-resistant all-glass partitions
- B Fire-resistant glazed doors
- C Fire-resistant curtain walls - facades
- D Fire-resistant floor glazing
- E Fire-resistant roof glazing
- F Fire resistant windows

## Why choose Pyrobel-T?



### XXL SIZE

The fire-resistant Pyrobel-T glass can be delivered in **very large sizes**.



### RESISTANT

In addition to its excellent fire resistance performance, **Pyrobel-T provides resistance to impacts, water and UV rays**.



### HEAT SOAK TEST AVAILABLE ON REQUEST

Many spontaneous breakages of tempered glass are caused by nickel sulphide inclusions (NiS). The Heat Soak Test (HST) **excludes panes likely to suffer breakages**. This test is available on request.



### SUPERB TRANSPARENCY

Pyrobel-T glasses have an **exceptional light transmission**.



### PROVIDING SOLUTIONS

We support our customers **with our high-level expertise**.



### MADE IN EUROPE



The information and data contained in this document are subject to change without notice.

Questions? Contact our sales team! [www.agc-pyrobel.com/contact](http://www.agc-pyrobel.com/contact)



# PYROBEL-T

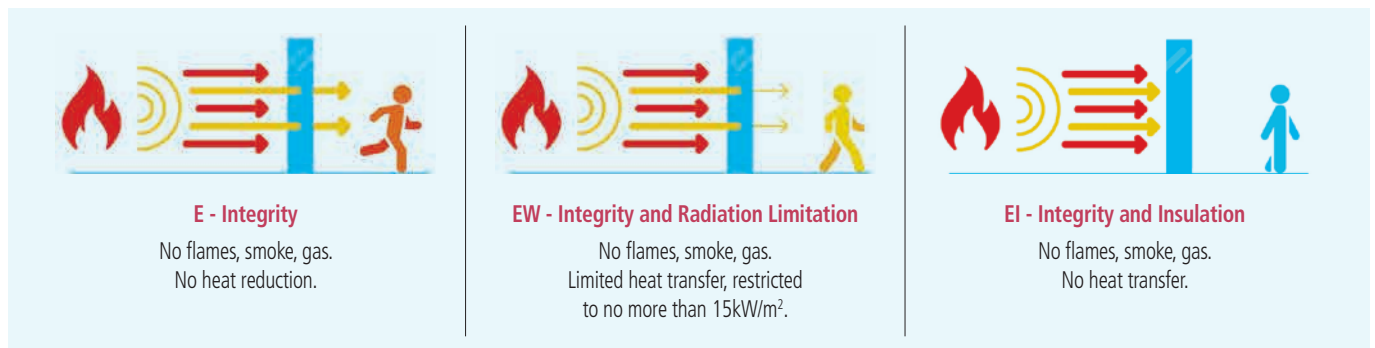
EW90

AGC

Fire-resistant glass focusing  
on your safety



**Pyrobel -T EW90** is an assembly of toughened sheets of glass, combined with fire-resistant clear intumescent interlayer(s). In the event of fire, the interlayer(s) transform into rigid and opaque fire shield(s), that keep out flames and limit the heat transmission through the glazing. Pyrobel-T is a technology for XXL fire-resistant glass up to 4,5m high. The glass delivers fire protection in both directions according to the standard EN 13501-2.



## Technical data

Specification / Identification	Pyrobel-T EW90-16	Pyrobel-T EW90-20
Glazing type	Single	Single
Grade	Internal, UV resistant	Internal, UV resistant
Glass thickness	16,0 mm	20,0 mm
Thickness tolerances	± 1,0 mm	± 1,2 mm
Dimensions tolerances	± 2 mm	± 2 mm
Weight	ca 36 kg/m <sup>2</sup>	ca 46 kg/m <sup>2</sup>
Max dimensions	2,0 x 4,5 m	2,0 x 4,5 m
Minimum dimensions	0,2 x 0,35 m	0,2 x 0,35 m
Light transmission / Light reflection (%)	87 / 8	86 / 8
U value (EN 673)	5,4 W/(m <sup>2</sup> .K)	5,3 W/(m <sup>2</sup> .K)
Impact resistance (EN 12600)	1B1	1B1
Sound reduction (EN 12758) Rw (C; Ctr)	37 (-1; -2) dB	37 (-1; -3) dB
Exposure temperatures	-10°C / +50°C	

## Fire certification

Check out the product selector for availabilities of fire certification on [www.agc-pyrobel.com/selector](http://www.agc-pyrobel.com/selector).  
The installation must be done in compliance with the fire test report.

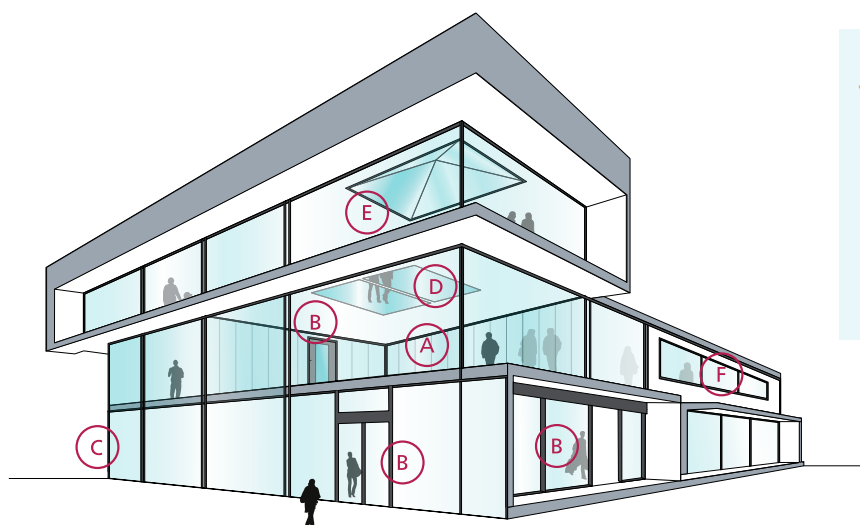
## Availability

- SGU** Single glazing unit for internal application
- IGU** Insulated glazing unit for outdoor applications (double or triple glazing)
- SPS** Special products and combinations such as bulletproof and burglar resistant glass

**VL** Vision Line which is an all-glass butt-joint glazing system without mullions. Separate technical data sheets are available for this range of products

## Applications

The Pyrobel-T product range has been tested in a large variety of aluminium, steel, wood & butt-joint systems:



- A Fire-resistant all-glass partitions
- B Fire-resistant glazed doors
- C Fire-resistant curtain walls - facades
- D Fire-resistant floor glazing
- E Fire-resistant roof glazing
- F Fire resistant windows

## Why choose Pyrobel-T?



### XXL SIZE

The fire-resistant Pyrobel-T glass can be delivered in **very large sizes**.



### RESISTANT

In addition to its excellent fire resistance performance, **Pyrobel-T provides resistance to impacts, water and UV rays**.



### HEAT SOAK TEST AVAILABLE ON REQUEST

Many spontaneous breakages of tempered glass are caused by nickel sulphide inclusions (NiS). The Heat Soak Test (HST) **excludes panes likely to suffer breakages**. This test is available on request.



### SUPERB TRANSPARENCY

Pyrobel-T glasses have an **exceptional light transmission**.



### PROVIDING SOLUTIONS

We support our customers **with our high-level expertise**.



### MADE IN EUROPE



The information and data contained in this document are subject to change without notice.

Questions? Contact our sales team! [www.agc-pyrobel.com/contact](http://www.agc-pyrobel.com/contact)



# PYROBEL-T

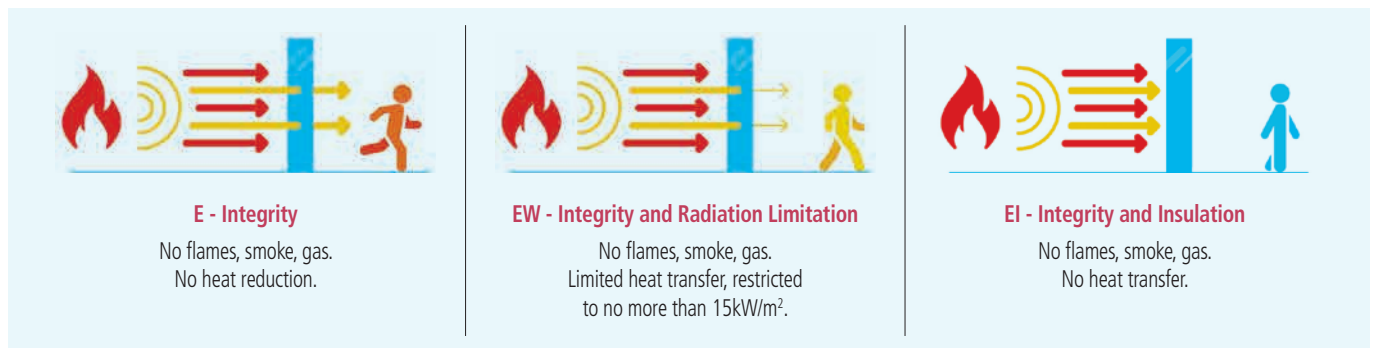
EW120

AGC

Fire-resistant glass focusing  
on your safety



**Pyrobel -T EW120** is an assembly of toughened sheets of glass, combined with fire-resistant clear intumescent interlayer(s). In the event of fire, the interlayer(s) transform into rigid and opaque fire shield(s), that keep out flames and limit the heat transmission through the glazing. Pyrobel-T is a technology for XXL fire-resistant glass up to 4,5m high. The glass delivers fire protection in both directions according to the standard EN 13501-2.



## Technical data

Specification / Identification	Pyrobel-T EW120-16	Pyrobel-T EW120-20
Glazing type	Single	Single
Grade	Internal, UV resistant	Internal, UV resistant
Glass thickness	16,0 mm	20,0 mm
Thickness tolerances	± 1,0 mm	± 1,2 mm
Dimensions tolerances	± 2 mm	± 2 mm
Weight	ca 36 kg/m <sup>2</sup>	ca 46 kg/m <sup>2</sup>
Max dimensions	2,0 x 4,5 m	2,0 x 4,5 m
Minimum dimensions	0,2 x 0,35 m	0,2 x 0,35 m
Light transmission / Light reflection (%)	87 / 8	86 / 8
U value (EN 673)	5,4 W/(m <sup>2</sup> .K)	5,3 W/(m <sup>2</sup> .K)
Impact resistance (EN 12600)	1B1	1B1
Sound reduction (EN 12758) Rw (C; Ctr)	37 (-1; -2) dB	37 (-1; -3) dB
Exposure temperatures	-10°C / +50°C	

## Fire certification

Check out the product selector for availabilities of fire certification on [www.agc-pyrobel.com/selector](http://www.agc-pyrobel.com/selector).  
The installation must be done in compliance with the fire test report.

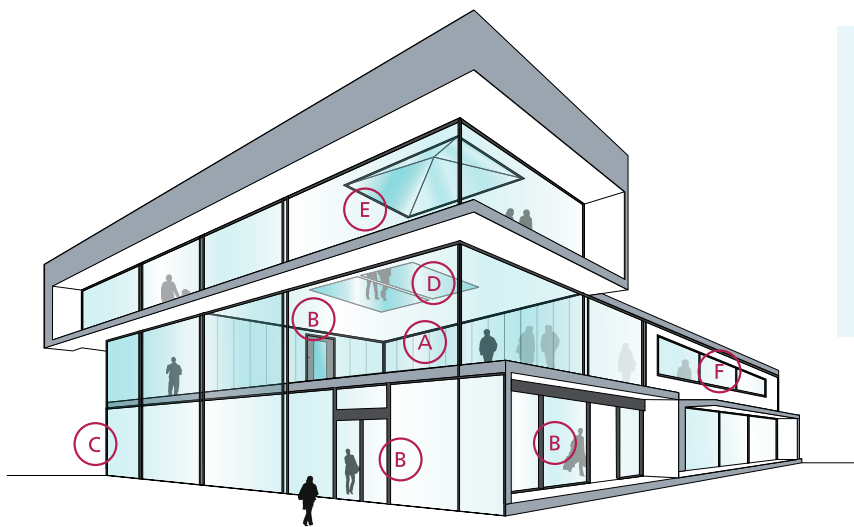
## Availability

- SGU** Single glazing unit for internal application
- IGU** Insulated glazing unit for outdoor applications (double or triple glazing)
- SPS** Special products and combinations such as bulletproof and burglar resistant glass

**VL** Vision Line which is an all-glass butt-joint glazing system without mullions. Separate technical data sheets are available for this range of products

## Applications

The Pyrobel-T product range has been tested in a large variety of aluminium, steel, wood & butt-joint systems:



- A Fire-resistant all-glass partitions
- B Fire-resistant glazed doors
- C Fire-resistant curtain walls - facades
- D Fire-resistant floor glazing
- E Fire-resistant roof glazing
- F Fire resistant windows

## Why choose Pyrobel-T?



### XXL SIZE

The fire-resistant Pyrobel-T glass can be delivered in **very large sizes**.



### RESISTANT

In addition to its excellent fire resistance performance, **Pyrobel-T provides resistance to impacts, water and UV rays**.



### HEAT SOAK TEST AVAILABLE ON REQUEST

Many spontaneous breakages of tempered glass are caused by nickel sulphide inclusions (NiS). The Heat Soak Test (HST) **excludes panes likely to suffer breakages**. This test is available on request.



### SUPERB TRANSPARENCY

Pyrobel-T glasses have an **exceptional light transmission**.



### PROVIDING SOLUTIONS

We support our customers **with our high-level expertise**.



### MADE IN EUROPE



The information and data contained in this document are subject to change without notice.

Questions? Contact our sales team! [www.agc-pyrobel.com/contact](http://www.agc-pyrobel.com/contact)





# PYROBEL-T

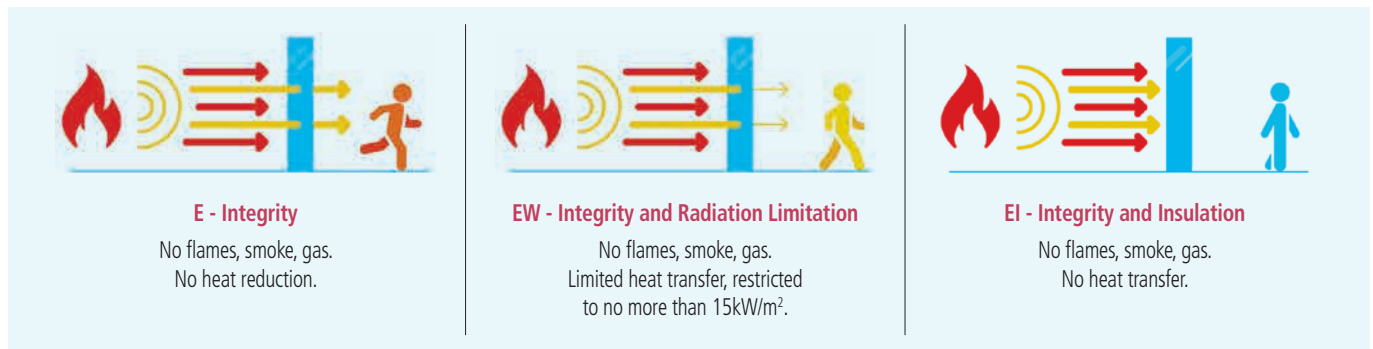
EI30

AGC

Fire-resistant glass focusing on your safety



**Pyrobel -T EI30** is an assembly of toughened sheets of glass, combined with fire-resistant clear intumescent interlayer(s). In the event of fire, the interlayer(s) transform into rigid and opaque fire shield(s), that keep out flames and reduce strongly the temperature on the protected surface of the Pyrobel glass. Pyrobel-T is a technology for XXL fire-resistant glass up to 4,5m high. The glass delivers fire protection in both directions according to the standard EN 13501-2.



## Technical data

Specification / Identification	Pyrobel-T EI30-18	Pyrobel-T EI30 IGU
Glazing type	Single	Double (or triple) Glazing Unit
Grade	Internal, UV resistant	External, UV resistant
Glass thickness	18,0 mm	Consult the Glass Configurator: <a href="http://www.agc-yourglass.com/configurator">www.agc-yourglass.com/configurator</a>
Thickness tolerances	± 1,4 mm	
Dimensions tolerances	± 2 mm	
Weight	ca 39 kg/m <sup>2</sup>	
Max dimensions	2,0 x 4,5 m	
Minimum dimensions	0,2 x 0,35 m	
Light transmission / Light reflection (%)	87 / 9	
U value (EN 673)	5,3 W/(m <sup>2</sup> .K)	
Impact resistance (EN 12600)	1B1	
Sound reduction (EN 12758) Rw (C; Ctr)	39 (-1; -2) dB	
Exposure temperatures	-10°C / +50°C	

## Fire certification

Check out the product selector for availabilities of fire certification on [www.agc-pyrobel.com/selector](http://www.agc-pyrobel.com/selector). The installation must be done in compliance with the fire test report.

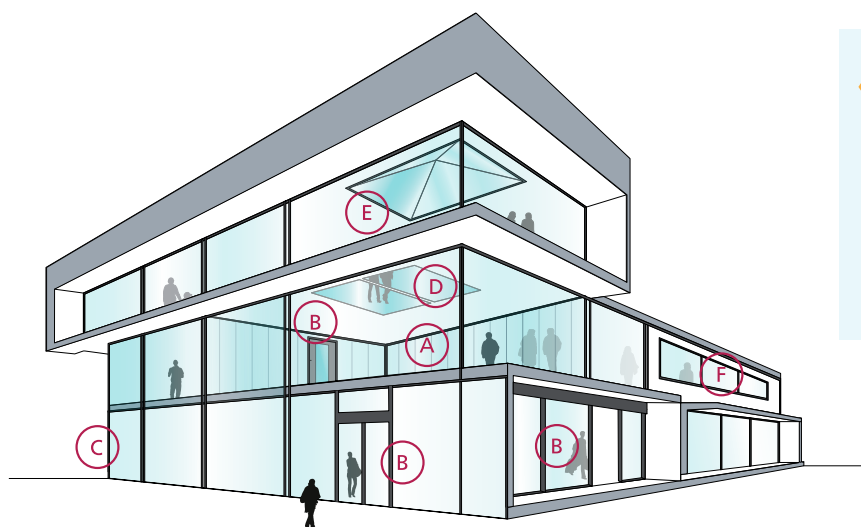
## Availability

- SGU** Single glazing unit for internal application
- IGU** Insulated glazing unit for outdoor applications (double or triple glazing)
- SPS** Special products and combinations such as bulletproof and burglar resistant glass

**VL** Vision Line which is an all-glass butt-joint glazing system without mullions. Separate technical data sheets are available for this range of products

## Applications

The Pyrobel-T product range has been tested in a large variety of aluminium, steel, wood & butt-joint systems:



- A Fire-resistant all-glass partitions
- B Fire-resistant glazed doors
- C Fire-resistant curtain walls - facades
- D Fire-resistant floor glazing
- E Fire-resistant roof glazing
- F Fire resistant windows

## Why choose Pyrobel-T?



### XXL SIZE

The fire-resistant Pyrobel-T glass can be delivered in **very large sizes**.



### RESISTANT

In addition to its excellent fire resistance performance, **Pyrobel-T provides resistance to impacts, water and UV rays**.



### HEAT SOAK TEST AVAILABLE ON REQUEST

Many spontaneous breakages of tempered glass are caused by nickel sulphide inclusions (NiS). The Heat Soak Test (HST) **excludes panes likely to suffer breakages**. This test is available on request.



### SUPERB TRANSPARENCY

Pyrobel-T glasses have an **exceptional light transmission**.



### PROVIDING SOLUTIONS

We support our customers **with our high-level expertise**.



### MADE IN EUROPE



The information and data contained in this document are subject to change without notice.

Questions? Contact our sales team! [www.agc-pyrobel.com/contact](http://www.agc-pyrobel.com/contact)



# PYROBEL-T

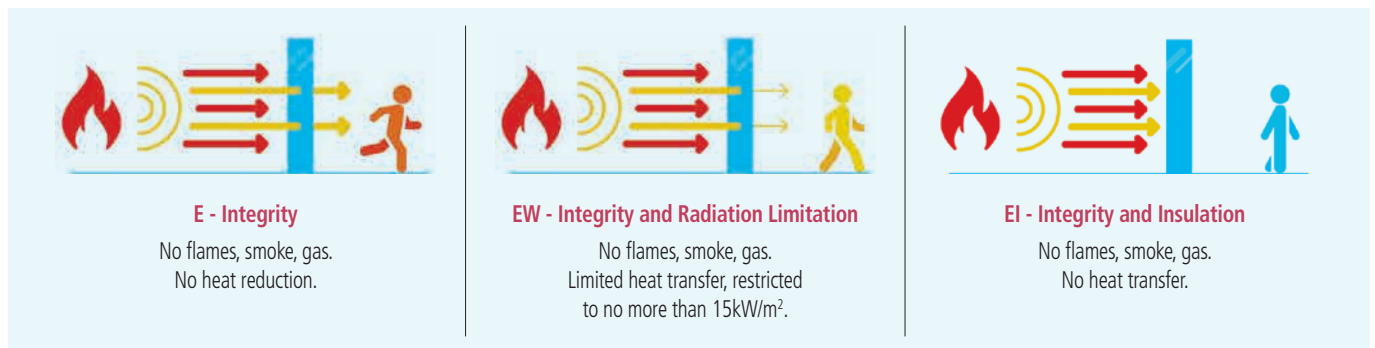
EI60

AGC

Fire-resistant glass focusing on your safety



**Pyrobel -T EI60** is an assembly of toughened sheets of glass, combined with fire-resistant clear intumescent interlayers. In the event of fire, the interlayers transform into rigid and opaque fire shields, that keep out flames and reduce strongly the temperature on the protected surface of the Pyrobel glass. Pyrobel-T is a technology for XXL fire-resistant glass up to 4,5m high. The glass delivers fire protection in both directions according to the standard EN 13501-2.



## Technical data

Specification / Identification	Pyrobel-T EI60-28	Pyrobel-T EI60 IGU
Glazing type	Single	Double (or triple) Glazing Unit
Grade	Internal, UV resistant	External, UV resistant
Glass thickness	28,0 mm	Consult the Glass Configurator: <a href="http://www.agc-yourglass.com/configurator">www.agc-yourglass.com/configurator</a>
Thickness tolerances	± 2,0 mm	
Dimensions tolerances	± 2 mm	
Weight	ca 60 kg/m <sup>2</sup>	
Max dimensions	2,0 x 4,5 m	
Minimum dimensions	0,2 x 0,35 m	
Light transmission / Light reflection (%)	84 / 9	
U value (EN 673)	5,0 W/(m <sup>2</sup> .K)	
Impact resistance (EN 12600)	1B1	
Sound reduction (EN 12758) Rw (C; Ctr)	42 (-2; -3) dB	
Exposure temperatures	-10°C / +50°C	

## Fire certification

Check out the product selector for availabilities of fire certification on [www.agc-pyrobel.com/selector](http://www.agc-pyrobel.com/selector). The installation must be done in compliance with the fire test report.

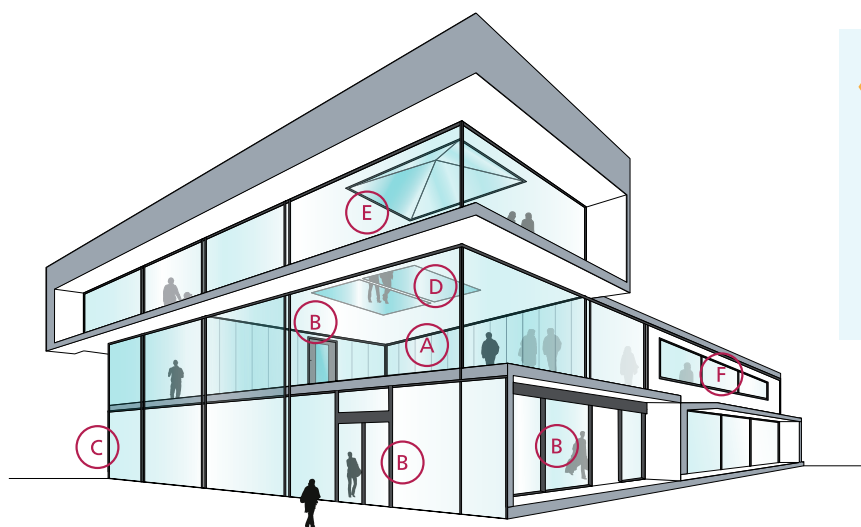
## Availability

- SGU** Single glazing unit for internal application
- IGU** Insulated glazing unit for outdoor applications (double or triple glazing)
- SPS** Special products and combinations such as bulletproof and burglar resistant glass

**VL** Vision Line which is an all-glass butt-joint glazing system without mullions. Separate technical data sheets are available for this range of products

## Applications

The Pyrobel-T product range has been tested in a large variety of aluminium, steel, wood & butt-joint systems:



- A Fire-resistant all-glass partitions
- B Fire-resistant glazed doors
- C Fire-resistant curtain walls - facades
- D Fire-resistant floor glazing
- E Fire-resistant roof glazing
- F Fire resistant windows

## Why choose Pyrobel-T?



### XXL SIZE

The fire-resistant Pyrobel-T glass can be delivered in **very large sizes**.



### RESISTANT

In addition to its excellent fire resistance performance, **Pyrobel-T provides resistance to impacts, water and UV rays**.



### HEAT SOAK TEST AVAILABLE ON REQUEST

Many spontaneous breakages of tempered glass are caused by nickel sulphide inclusions (NiS). The Heat Soak Test (HST) **excludes panes likely to suffer breakages**. This test is available on request.



### SUPERB TRANSPARENCY

Pyrobel-T glasses have an **exceptional light transmission**.



### PROVIDING SOLUTIONS

We support our customers **with our high-level expertise**.



### MADE IN EUROPE



The information and data contained in this document are subject to change without notice.

Questions? Contact our sales team! [www.agc-pyrobel.com/contact](http://www.agc-pyrobel.com/contact)

