

# PYROBEL 8

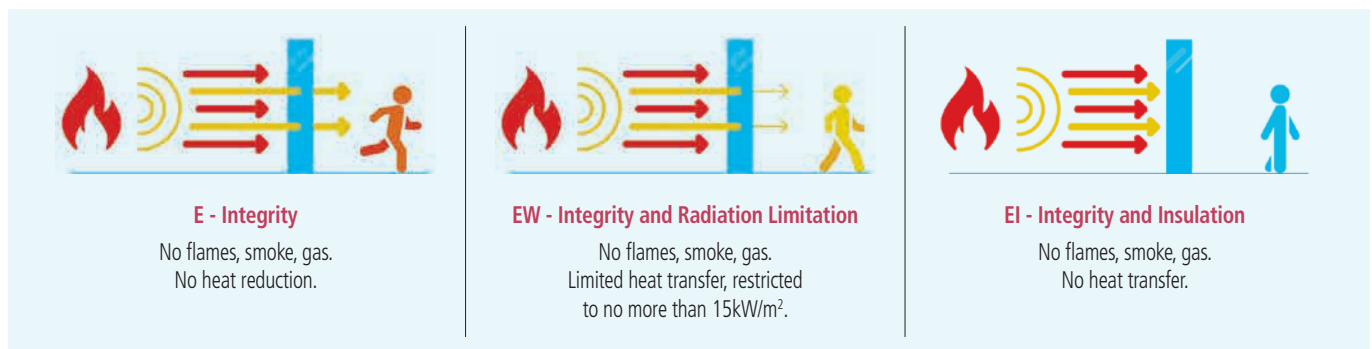
EI15/EW30

AGC

Fire-resistant glass focusing on your safety



**Pyrobel 8** is a laminated glass assembled with sheets of glass and fire-resistant clear intumescent interlayers. In the event of fire, the interlayers transform into rigid and opaque fire shields, that keep out flames, limit the heat transfer through the glazing and reduce strongly the temperature on the protected surface of the Pyrobel glass. The glass delivers fire protection in both directions according to the standard EN 13501-2.



## Technical data

Identification	Pyrobel 8	Pyrobel 8 EG	Pyrobel 8 IGU
Glazing type	Single	Single	Double (or triple) Glazing Unit
Grade	Internal	Internal, 1 side UV filter	External with UV filter
Glass thickness	9,3 mm	13,1 mm	Consult the Glass Configurator: <a href="http://www.agc-yourglass.com/configurator">www.agc-yourglass.com/configurator</a>
Thickness tolerances	± 1 mm	± 1,3 mm	
Dimensional tolerances	± 2 mm	± 2 mm	
Weight	ca 20 kg/m <sup>2</sup>	ca 28 kg/m <sup>2</sup>	
Minimum dimensions	No minimum	No minimum	
Light transmission / Light reflection (%)	88 / 8	87 / 8	
CV* Light transmission / Light reflection (%)	90 / 8	90 / 8	
U value (EN 673)	5,6 W/(m <sup>2</sup> .K)	5,5 W/(m <sup>2</sup> .K)	
Impact resistance (EN 12600)	NPD**	1B1	
Sound reduction (EN 12758) Rw (C; Ctr)	34 (-1; -3) dB	36 (-1; -3) dB	
Exposure temperatures		-40°C / +50°C	

\* Clearvision (CV) optional, low iron extra clear glass by AGC.

\*\* No performance declared, see Glass configurator.

## Fire certification

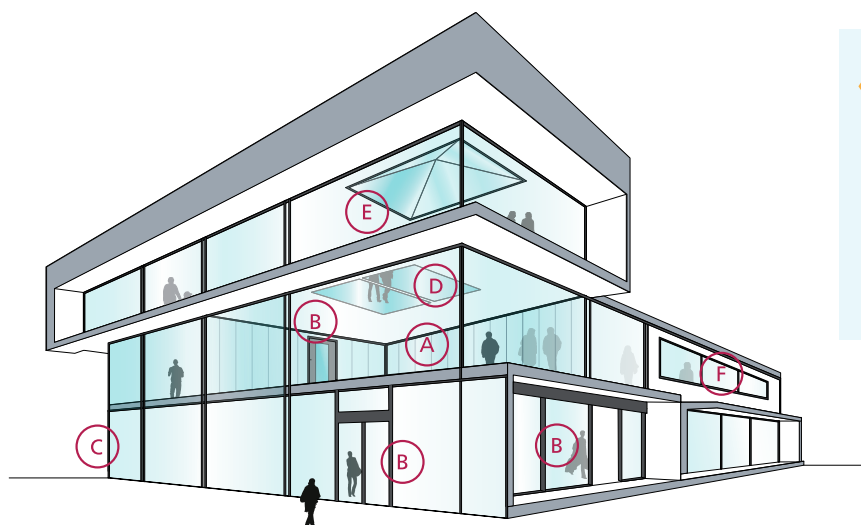
Check out the product selector for availabilities of fire certification on [www.agc-pyrobel.com/selector](http://www.agc-pyrobel.com/selector). The installation must be done in compliance with the fire test report. Pyrobel(ite) is extensively tested & approved under different standards: EN, BS, UL, ASTM, NFPA,...

## Availability

- SGU** Single glazing unit for internal application
- IGU** Insulated glazing unit for outdoor applications (double or triple glazing)
- EG** External grade version Pyrobel EG is single glazed Pyrobel with a 0,76 mm pvb interlayer and extra glass pane that acts as an UV filter
- VL** Vision Line which is an all-glass butt-joint glazing system without mullions. Multiple fire-resistant panes of glass are interconnected by means of a 4-5 mm silicone joint. Separate technical data sheets are available for this range of products
- SPS** Special products and combinations such as bulletproof and burglar resistant glass

## Applications

The Pyrobel product range has been tested in a large variety of aluminium, steel, wood & butt-joint systems:



- A Fire-resistant all-glass partitions
- B Fire-resistant glazed doors
- C Fire-resistant curtain walls - facades
- D Fire-resistant floor glazing
- E Fire-resistant roof glazing
- F Fire resistant windows

## Why choose Pyrobel(ite)?



### THE SHORTEST DELIVERY TIMES

Since Pyrobel(ite) **can be cut** by our network of distributors, they can supply you with what you need **quickly and efficiently**.



### ACOUSTIC INSULATION

Pyrobel(ite) has excellent **acoustic insulation properties**.



### CRADLE TO CRADLE CERTIFIED

Pyrobel(ite) is **Cradle to Cradle Certified™ Silver**.



### QUALITY

With 40 years of experience, Pyrobel delivers proven long-term quality. Pyrobel(ite) glass has an excellent optical quality supported by a **10-year warranty**.



### PROVIDING SOLUTIONS

We support our customers **with our high-level expertise**.



### MADE IN EUROPE



The information and data contained in this document are subject to change without notice.  
 Questions? Contact our sales team! [www.agc-pyrobel.com/contact](http://www.agc-pyrobel.com/contact)



# PYROBEL 16

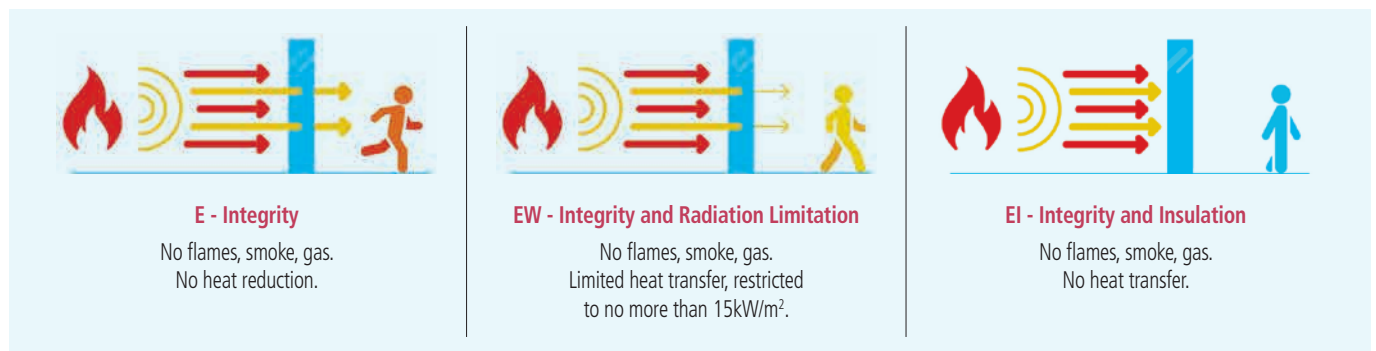
EI30 / EW60

AGC

Fire-resistant glass focusing on your safety



**Pyrobel 16** is a laminated glass assembled with sheets of glass and fire-resistant clear intumescent interlayers. In the event of fire, the interlayers transform into rigid and opaque fire shields, that keep out flames, limit the heat transfer through the glazing and reduce strongly the temperature on the protected surface of the Pyrobel glass. The glass delivers fire protection in both directions according to the standard EN 13501-2.



## Technical data

Specification / Identification	Pyrobel 16	Pyrobel 16 EG	Pyrobel 16 IGU
Glazing type	Single	Single	Double (or triple) Glazing Unit
Grade	Internal	Internal, 1 side UV filter	External with UV filter
Glass thickness	17,3 mm	21,1 mm	Consult the Glass Configurator: <a href="http://www.agc-yourglass.com/configurator">www.agc-yourglass.com/configurator</a>
Thickness tolerances	± 1 mm	± 1,5 mm	
Dimensional tolerances	± 2 mm	± 2 mm	
Weight	ca 40 kg/m <sup>2</sup>	ca 48 kg/m <sup>2</sup>	
Minimum dimensions	No minimum	No minimum	
Light transmission / Light reflection (%)	85 / 8	84 / 8	
CV* Light transmission / Light reflection (%)	89 / 8	89 / 8	
U value (EN 673)	5,3 W/(m <sup>2</sup> .K)	5,3 W/(m <sup>2</sup> .K)	
Impact resistance (EN 12600)	2B2	1B1	
Burglar resistance (EN 356)**	NPD***	P2A	
Sound reduction (EN 12758) Rw (C; Ctr)	39 (-1; -3) dB	39 (-1; -3) dB	
Exposure temperatures		-40°C / +50°C	

\* Clearvision (CV) optional, low iron extra clear glass by AGC.

\*\* The burglar resistance can be increased from P2A to P8B by laminating or assembling in IGU Pyrobel with Stratobel & Stratobel Security Burglary.

\*\*\* No performance declared, see Glass configurator.

## Fire certification

Check out the product selector for availabilities of fire certification on [www.agc-pyrobel.com/selector](http://www.agc-pyrobel.com/selector). The installation must be done in compliance with the fire test report. Pyrobel(ite) is extensively tested & approved under different standards: EN, BS, UL, ASTM, NFPA,...



Your Dreams, Our Challenge

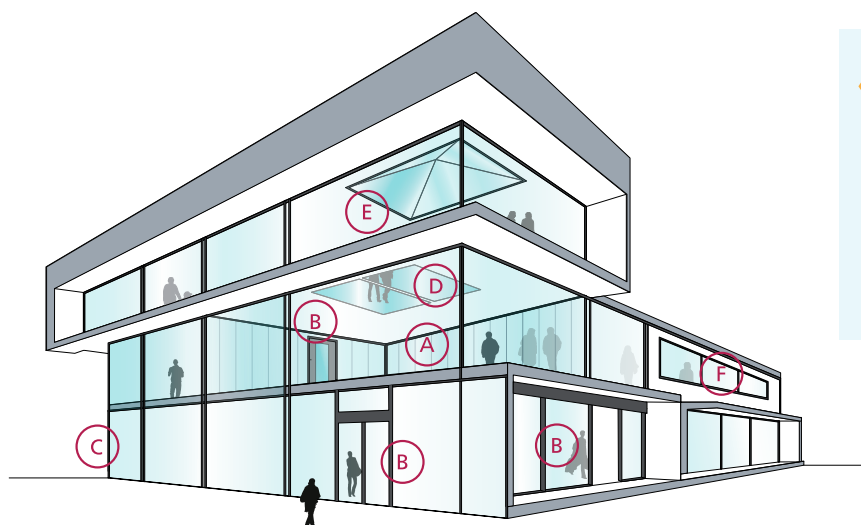
## Availability

- SGU** Single glazing unit for internal application
- IGU** Insulated glazing unit for outdoor applications (double or triple glazing)
- EG** External grade version Pyrobel EG is single glazed Pyrobel with a 0,76 mm pvb interlayer and extra glass pane that acts as an UV filter

- VL** Vision Line which is an all-glass butt-joint glazing system without mullions. Multiple fire-resistant panes of glass are interconnected by means of a 4-5 mm silicone joint. Separate technical data sheets are available for this range of products
- SPS** Special products and combinations such as bulletproof and burglar resistant glass

## Applications

The Pyrobel product range has been tested in a large variety of aluminium, steel, wood & butt-joint systems:



- A Fire-resistant all-glass partitions
- B Fire-resistant glazed doors
- C Fire-resistant curtain walls - facades
- D Fire-resistant floor glazing
- E Fire-resistant roof glazing
- F Fire resistant windows

## Why choose Pyrobel(ite)?



### THE SHORTEST DELIVERY TIMES

Since Pyrobel(ite) **can be cut** by our network of distributors, they can supply you with what you need **quickly and efficiently**.



### ACOUSTIC INSULATION

Pyrobel(ite) has excellent **acoustic insulation properties**.



### CRADLE TO CRADLE CERTIFIED

Pyrobel(ite) is **Cradle to Cradle Certified™ Silver**.



### QUALITY

With 40 years of experience, Pyrobel delivers proven long-term quality. Pyrobel(ite) glass has an excellent optical quality supported by a **10-year warranty**.



### PROVIDING SOLUTIONS

We support our customers **with our high-level expertise**.



### MADE IN EUROPE



The information and data contained in this document are subject to change without notice.  
 Questions? Contact our sales team! [www.agc-pyrobel.com/contact](http://www.agc-pyrobel.com/contact)



# PYROBEL 17N

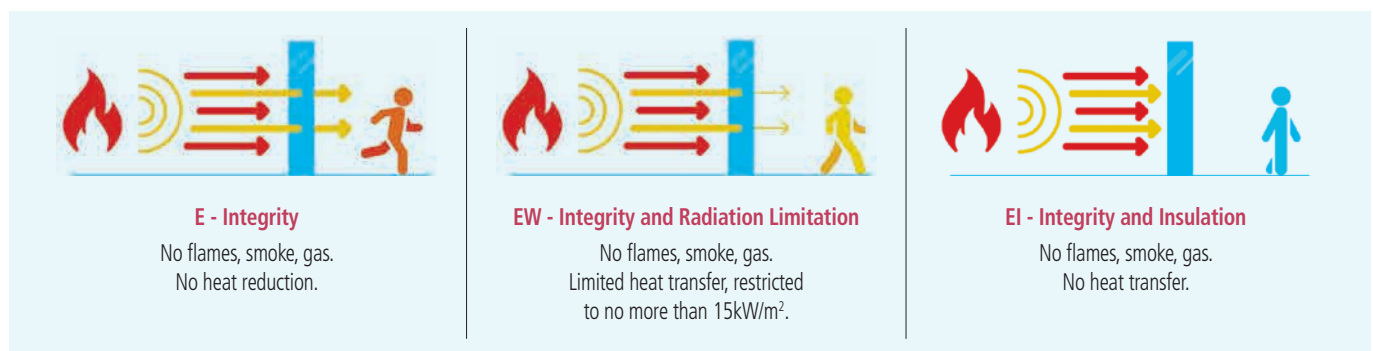
EI45/EW60

AGC

Fire-resistant glass focusing on your safety



**Pyrobel 17N** is a laminated glass assembled with sheets of glass and fire-resistant clear intumescent interlayers. In the event of fire, the interlayers transform into rigid and opaque fire shields, that keep out flames, limit the heat transfer through the glazing and reduce strongly the temperature on the protected surface of the Pyrobel glass. The glass delivers fire protection in both directions according to the standard EN 13501-2.



## Technical data

Specification / Identification	Pyrobel 17N	Pyrobel 17N EG	Pyrobel 17N IGU
Glazing type	Single	Single	Double (or triple) Glazing Unit
Grade	Internal	Internal, 1 side UV filter	External with UV filter
Glass thickness	17,8 mm	21,6 mm	Consult the Glass Configurator: <a href="http://www.agc-yourglass.com/configurator">www.agc-yourglass.com/configurator</a>
Thickness tolerances	± 1,6 mm	± 1,8 mm	
Dimensions tolerances	± 2 mm	± 2 mm	
Weight	ca 40 kg/m <sup>2</sup>	ca 48 kg/m <sup>2</sup>	
Minimum dimensions	No minimum	No minimum	
Light transmission / Light reflection (%)	86 / 8	85 / 8	
CV*Light transmission / Light reflection (%)	89 / 8	88 / 8	
U value (EN 673)	5,4 W/(m <sup>2</sup> .K)	5,2 W/(m <sup>2</sup> .K)	
Impact resistance (EN 12600)	1B1	1B1	
Burglar resistance (EN 356)**	P1A	P2A	
Sound reduction (EN 12758) Rw (C; Ctr)	39 (0; -3) dB	40 (-1; -3) dB	
Exposure temperatures		-40°C / +50°C	

\* Clearvision (CV) optional, low iron extra clear glass by AGC.

\*\* The burglar resistance can be increased from P2A to P8B by laminating or assembling in IGU Pyrobel with Stratobel & Stratobel Security Burglary.

## Fire certification

Check out the product selector for availabilities of fire certification on [www.agc-pyrobel.com/selector](http://www.agc-pyrobel.com/selector). The installation must be done in compliance with the fire test report. Pyrobel(ite) is extensively tested & approved under different standards: EN, BS, UL, ASTM, NFPA,...

 **PYROBEL**

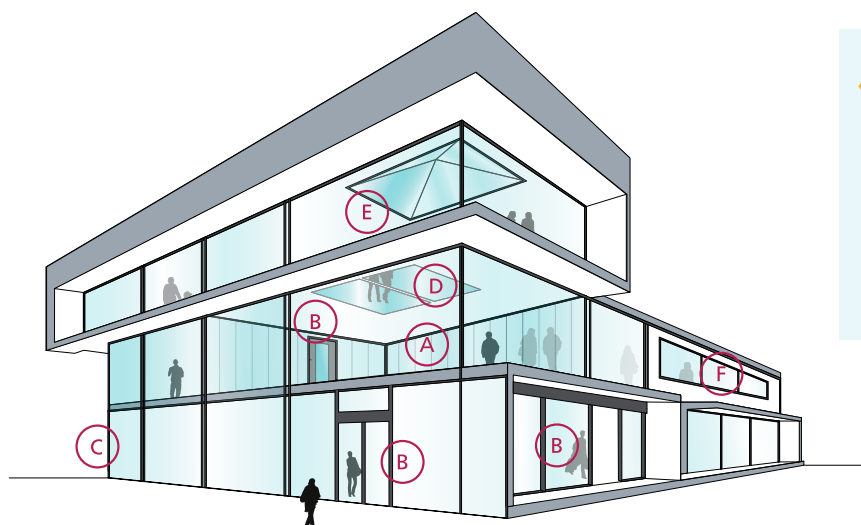
Your Dreams, Our Challenge

## Availability

- SGU** Single glazing unit for internal application
- IGU** Insulated glazing unit for outdoor applications (double or triple glazing)
- EG** External grade version Pyrobel EG is single glazed Pyrobel with a 0,76 mm pvb interlayer and extra glass pane that acts as an UV filter
- VL** Vision Line which is an all-glass butt-joint glazing system without mullions. Multiple fire-resistant panes of glass are interconnected by means of a 4-5 mm silicone joint. Separate technical data sheets are available for this range of products
- SPS** Special products and combinations such as bulletproof and burglar resistant glass

## Applications

The Pyrobel product range has been tested in a large variety of aluminium, steel, wood & butt-joint systems:



- A Fire-resistant all-glass partitions
- B Fire-resistant glazed doors
- C Fire-resistant curtain walls - facades
- D Fire-resistant floor glazing
- E Fire-resistant roof glazing
- F Fire resistant windows

## Why choose Pyrobel(ite)?



### THE SHORTEST DELIVERY TIMES

Since Pyrobel(ite) **can be cut** by our network of distributors, they can supply you with what you need **quickly and efficiently**.



### ACOUSTIC INSULATION

Pyrobel(ite) has excellent **acoustic insulation properties**.



### CRADLE TO CRADLE CERTIFIED

Pyrobel(ite) is **Cradle to Cradle Certified™ Silver**.



### QUALITY

With 40 years of experience, Pyrobel delivers proven long-term quality. Pyrobel(ite) glass has an excellent optical quality supported by a **10-year warranty**.



### PROVIDING SOLUTIONS

We support our customers **with our high-level expertise**.



### MADE IN EUROPE



The information and data contained in this document are subject to change without notice.  
 Questions? Contact our sales team! [www.agc-pyrobel.com/contact](http://www.agc-pyrobel.com/contact)





# PYROBEL 21

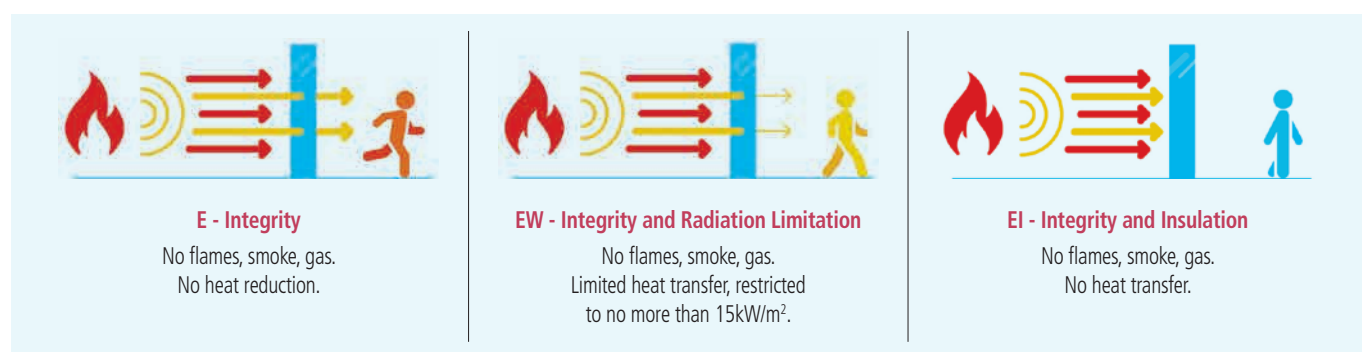
EI45/EW60

AGC

Fire-resistant glass focusing  
on your safety



**Pyrobel 21** is a laminated glass assembled with sheets of glass and fire-resistant clear intumescent interlayers. In the event of fire, the interlayers transform into rigid and opaque fire shields, that keep out flames, limit the heat transfer through the glazing and reduce strongly the temperature on the protected surface of the Pyrobel glass. The glass delivers fire protection in both directions according to the standard EN 13501-2.



## Technical data

Specification / Identification	Pyrobel 21	Pyrobel 21 EG	Pyrobel 21 IGU 44.2 - 8 - Pyrobel 21
Glazing type	Single	Single	Double Glazing Unit
Grade	Internal	Internal / External	External
Structure	3/3/3/3/3	3/3/3/3/3:3	Consult the Glass Configurator: <a href="http://www.agc-yourglass.com/configurator">www.agc-yourglass.com/ configurator</a>
Glass thickness	21,6 mm	25,4 mm	
Thickness tolerances	± 2 mm	± 2 mm	
Dimensions tolerances	± 2 mm	± 2 mm	
Weight	ca 47 kg/m <sup>2</sup>	ca 55 kg/m <sup>2</sup>	
Minimum dimensions	No minimum	No minimum	
Light properties (EN 410) τ <sub>v</sub> /ρ <sub>v</sub> (%)	80 / 7	79 / 7	
U value (EN 673)	5,2 W/(m <sup>2</sup> .K)	5,1 W/(m <sup>2</sup> .K)	
Impact resistance (EN 12600)	1B1	1B1	
Burglar resistance (EN 356)	P1A*	P2A*	
Sound reduction (EN 12758) R <sub>w</sub> (C; C <sub>tr</sub> )	38 (-1; -3) dB	40 (-1; -3) dB	

\* The burglar resistance can be increased from P2A to P8B by laminating or assembling in IGU Pyrobel with Stratobel & Stratobel Security Burglary.

## Fire certification

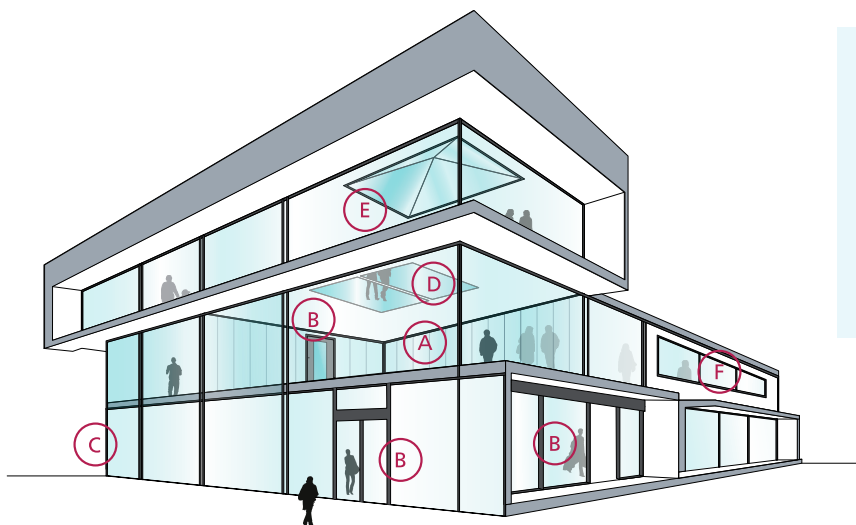
Check out the product selector for availabilities of fire certification on [www.agc-pyrobel.com/selector](http://www.agc-pyrobel.com/selector). The installation must be done in compliance with the fire test report. Pyrobel(ite) is extensively tested & approved under different standards: EN, BS, UL, ASTM, NFPA,...

## Availability

- SGU** Single glazing unit for internal application
- IGU** Insulated glazing unit for outdoor applications (double or triple glazing)
- EG** External grade version Pyrobel EG is single glazed Pyrobel with a 0,76 mm pvb interlayer and extra glass pane that acts as an UV filter
- VL** Vision Line which is an all-glass butt-joint glazing system without mullions. Multiple fire-resistant panes of glass are interconnected by means of a 4-5 mm silicone joint. Separate technical data sheets are available for this range of products
- SPS** Special products and combinations such as bulletproof and burglar resistant glass

## Applications

The Pyrobel product range has been tested in a large variety of aluminium, steel, wood & butt-joint systems:





- A Fire-resistant all-glass partitions
- B Fire-resistant glazed doors
- C Fire-resistant curtain walls - facades
- D Fire-resistant floor glazing
- E Fire-resistant roof glazing
- F Fire resistant windows

## Why choose Pyrobel(ite)?



**THE SHORTEST DELIVERY TIMES**  
 Since Pyrobel(ite) **can be cut** by our network of distributors, they can supply you with what you need **quickly and efficiently**.



**ACOUSTIC INSULATION**  
 Pyrobel(ite) has excellent **acoustic insulation properties**.



**CRADLE TO CRADLE CERTIFIED**  
 Pyrobel(ite) is **Cradle to Cradle Certified™ Silver**.



**QUALITY**  
 With 40 years of experience, Pyrobel delivers proven long-term quality. Pyrobel(ite) glass has an excellent optical quality supported by a **10-year warranty**.



**PROVIDING SOLUTIONS**  
 We support our customers **with our high-level expertise**.



**MADE IN EUROPE**



The information and data contained in this document are subject to change without notice.  
 Questions? Contact our sales team! [www.agc-pyrobel.com/contact](http://www.agc-pyrobel.com/contact)





# PYROBEL 25

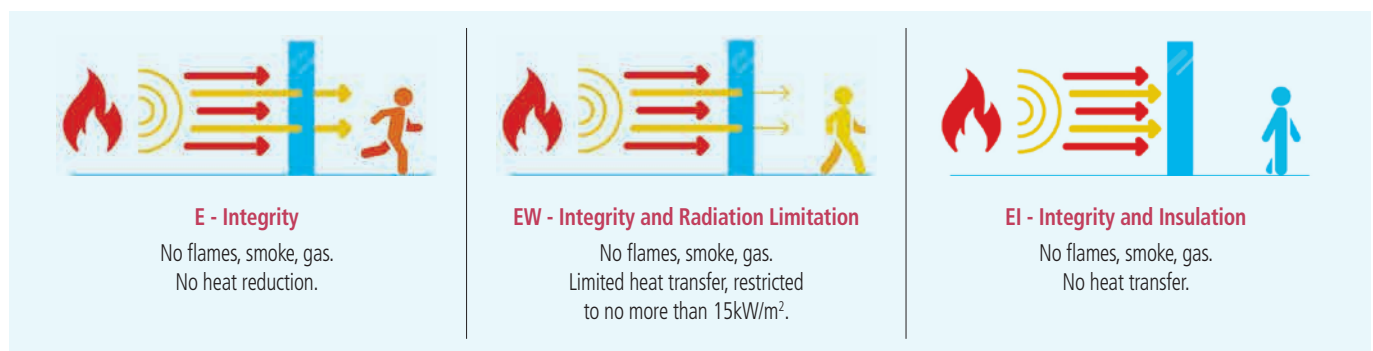
EI60

AGC

Fire-resistant glass focusing on your safety



**Pyrobel 25** is a laminated glass assembled with sheets of glass and fire-resistant clear intumescent interlayers. In the event of fire, the interlayers transform into rigid and opaque fire shields, that keep out flames, limit the heat transfer through the glazing and reduce strongly the temperature on the protected surface of the Pyrobel glass. The glass delivers fire protection in both directions according to the standard EN 13501-2.



## Technical data

Specification / Identification	Pyrobel 25	Pyrobel 25 EG	Pyrobel 25 IGU
Glazing type	Single	Single	Double (or triple) Glazing Unit
Grade	Internal	Internal, 1 side UV filter	External with UV filter
Glass thickness	26,6 mm	30,4 mm	Consult the Glass Configurator: <a href="http://www.agc-yourglass.com/configurator">www.agc-yourglass.com/configurator</a>
Thickness tolerances	± 2 mm	± 2 mm	
Dimensions tolerances	± 2 mm	± 2 mm	
Weight	ca 60 kg/m <sup>2</sup>	ca 68 kg/m <sup>2</sup>	
Minimum dimensions	No minimum	No minimum	
Light transmission / Light reflection (%)	82 / 7	82 / 7	
CV* Light transmission / Light reflection (%)	88 / 8	87 / 8	
U value (EN 673)	5,1 W/(m <sup>2</sup> .K)	5,0 W/(m <sup>2</sup> .K)	
Impact resistance (EN 12600)	1B1	1B1	
Burglar resistance (EN 356)**	P1A	P2A	
Sound reduction (EN 12758) Rw (C; Ctr)	43 (0; -3) dB	43 (-1; -4) dB	
Exposure temperatures		-40°C / +50°C	

\* Clearvision (CV) optional, low iron extra clear glass by AGC.

\*\* The burglar resistance can be increased from P2A to P8B by laminating or assembling in IGU Pyrobel with Stratobel & Stratobel Security Burglary.

## Fire certification

Check out the product selector for availabilities of fire certification on [www.agc-pyrobel.com/selector](http://www.agc-pyrobel.com/selector). The installation must be done in compliance with the fire test report. Pyrobel(ite) is extensively tested & approved under different standards: EN, BS, UL, ASTM, NFPA,...



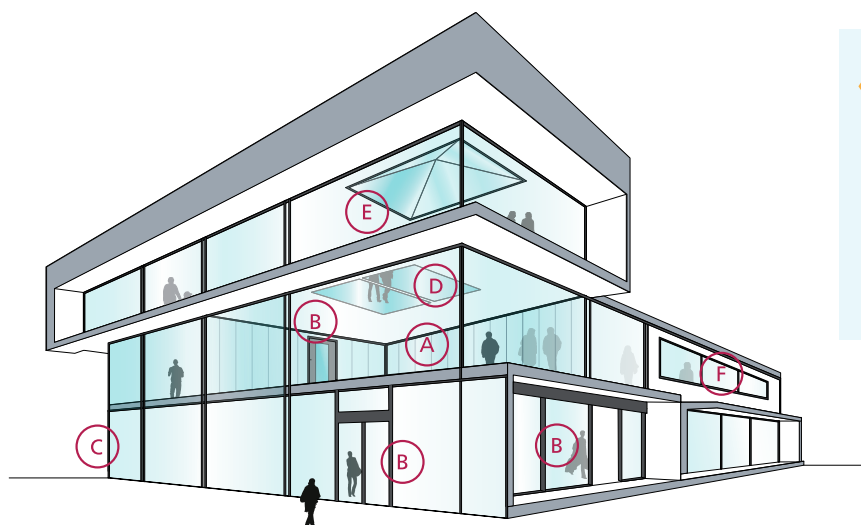
Your Dreams, Our Challenge

## Availability

- SGU** Single glazing unit for internal application
- IGU** Insulated glazing unit for outdoor applications (double or triple glazing)
- EG** External grade version Pyrobel EG is single glazed Pyrobel with a 0,76 mm pvb interlayer and extra glass pane that acts as an UV filter
- VL** Vision Line which is an all-glass butt-joint glazing system without mullions. Multiple fire-resistant panes of glass are interconnected by means of a 4-5 mm silicone joint. Separate technical data sheets are available for this range of products
- SPS** Special products and combinations such as bulletproof and burglar resistant glass

## Applications

The Pyrobel product range has been tested in a large variety of aluminium, steel, wood & butt-joint systems:





- A Fire-resistant all-glass partitions
- B Fire-resistant glazed doors
- C Fire-resistant curtain walls - facades
- D Fire-resistant floor glazing
- E Fire-resistant roof glazing
- F Fire resistant windows

## Why choose Pyrobel(ite)?



**THE SHORTEST DELIVERY TIMES**  
 Since Pyrobel(ite) **can be cut** by our network of distributors, they can supply you with what you need **quickly and efficiently**.



**ACOUSTIC INSULATION**  
 Pyrobel(ite) has excellent **acoustic insulation properties**.



**CRADLE TO CRADLE CERTIFIED**  
 Pyrobel(ite) is **Cradle to Cradle Certified™ Silver**.



**QUALITY**  
 With 40 years of experience, Pyrobel delivers proven long-term quality. Pyrobel(ite) glass has an excellent optical quality supported by a **10-year warranty**.



**PROVIDING SOLUTIONS**  
 We support our customers **with our high-level expertise**.



**MADE IN EUROPE**



The information and data contained in this document are subject to change without notice.  
 Questions? Contact our sales team! [www.agc-pyrobel.com/contact](http://www.agc-pyrobel.com/contact)



# PYROBEL 30

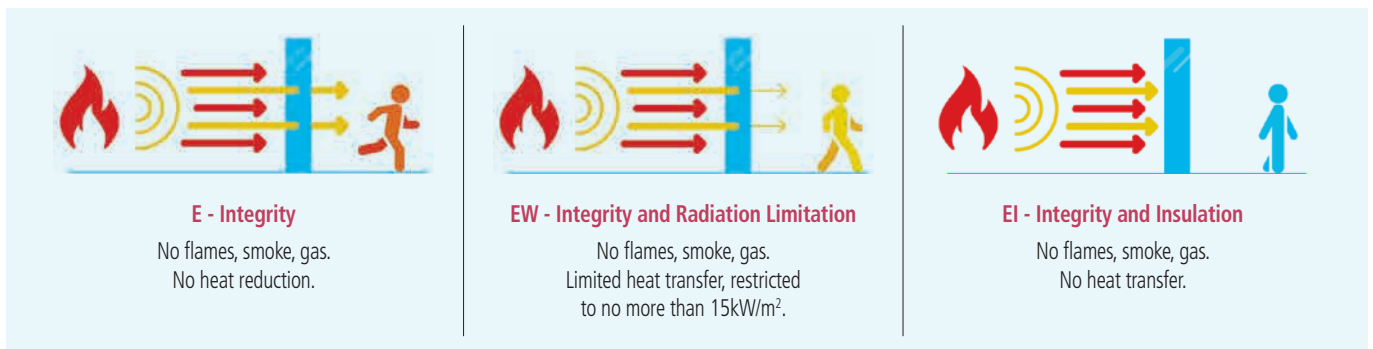
EI90

AGC

Fire-resistant glass focusing on your safety



**Pyrobel 30** is a laminated glass assembled with sheets of glass and fire-resistant clear intumescent interlayers. In the event of fire, the interlayers transform into rigid and opaque fire shields, that keep out flames, limit the heat transfer through the glazing and reduce strongly the temperature on the protected surface of the Pyrobel glass. The glass delivers fire protection in both directions according to the standard EN 13501-2.



## Technical data

Specification / Identification	Pyrobel 30	Pyrobel 30 EG	Pyrobel 30 IGU 44.2 - 8 - Pyrobel 30
Glazing type	Single	Single	Double Glazing Unit
Grade	Internal	Internal / External	External
Structure	3/3/3/3/3/3/3	3/3/3/3/3/3/3	
Glass thickness	30 mm	33,7 mm	
Thickness tolerances	± 2,5 mm	± 2,8 mm	
Dimensions tolerances	± 2 mm	± 2 mm	
Weight	ca 69 kg/m <sup>2</sup>	ca 77 kg/m <sup>2</sup>	
Minimum dimensions	No minimum	No minimum	
Light properties (EN 410) τ <sub>v</sub> /ρ <sub>v</sub> (%)	81 / 7	80 / 7	
U value (EN 673)	5,0 W/(m <sup>2</sup> .K)	4,8 W/(m <sup>2</sup> .K)	
Impact resistance (EN 12600)	1B1	1B1	
Sound reduction (EN 12758) R <sub>w</sub> (C; C <sub>tr</sub> )	42 (-1; -4) dB	43 (-1; -4) dB	

\* Clearvision (CV) optional, low iron extra clear glass by AGC.

\*\* The burglar resistance can be increased from P2A to P8B by laminating or assembling in IGU Pyrobel with Stratobel & Stratobel Security Burglary.

## Fire certification

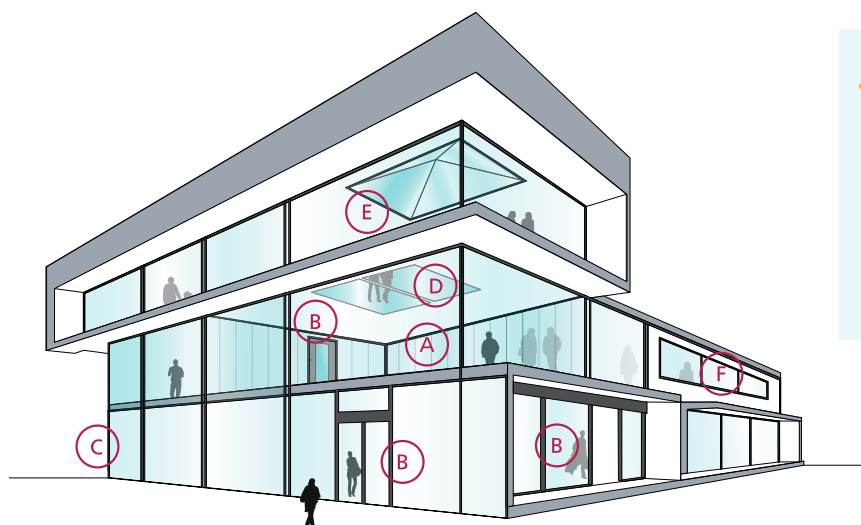
Check out the product selector for availabilities of fire certification on [www.agc-pyrobel.com/selector](http://www.agc-pyrobel.com/selector). The installation must be done in compliance with the fire test report. Pyrobel(ite) is extensively tested & approved under different standards: EN, BS, UL, ASTM, NFPA,...

## Availability

- SGU** Single glazing unit for internal application
- IGU** Insulated glazing unit for outdoor applications (double or triple glazing)
- EG** External grade version Pyrobel EG is single glazed Pyrobel with a 0,76 mm pvb interlayer and extra glass pane that acts as an UV filter
- VL** Vision Line which is an all-glass butt-joint glazing system without mullions. Multiple fire-resistant panes of glass are interconnected by means of a 4-5 mm silicone joint. Separate technical data sheets are available for this range of products
- SPS** Special products and combinations such as bulletproof and burglar resistant glass

## Applications

The Pyrobel product range has been tested in a large variety of aluminium, steel, wood & butt-joint systems:



- A Fire-resistant all-glass partitions
- B Fire-resistant glazed doors
- C Fire-resistant curtain walls - facades
- D Fire-resistant floor glazing
- E Fire-resistant roof glazing
- F Fire resistant windows

## Why choose Pyrobel(ite)?



### THE SHORTEST DELIVERY TIMES

Since Pyrobel(ite) **can be cut** by our network of distributors, they can supply you with what you need **quickly and efficiently**.



### ACOUSTIC INSULATION

Pyrobel(ite) has excellent **acoustic insulation properties**.



### CRADLE TO CRADLE CERTIFIED

Pyrobel(ite) is **Cradle to Cradle Certified™ Silver**.



### QUALITY

With 40 years of experience, Pyrobel delivers proven long-term quality. Pyrobel(ite) glass has an excellent optical quality supported by a **10-year warranty**.



### PROVIDING SOLUTIONS

We support our customers **with our high-level expertise**.



### MADE IN EUROPE



The information and data contained in this document are subject to change without notice.  
 Questions? Contact our sales team! [www.agc-pyrobel.com/contact](http://www.agc-pyrobel.com/contact)



# PYROBEL 30 EG2

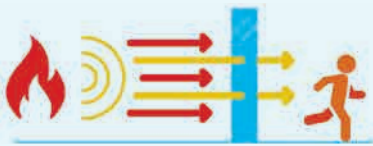
EI90

AGC

Fire-resistant glass focusing on your safety



**Pyrobel 30 EG2** is a laminated glass assembled with sheets of glass and fire-resistant clear intumescent interlayers. In the event of fire, the interlayers transform into rigid and opaque fire shields, that keep out flames, limit the heat transfer through the glazing and reduce strongly the temperature on the protected surface of the Pyrobel glass. The glass delivers fire protection in both directions according to the standard EN 13501-2.



#### E - Integrity

No flames, smoke, gas.  
No heat reduction.



#### EW - Integrity and Radiation Limitation

No flames, smoke, gas.  
Limited heat transfer, restricted to no more than 15kW/m<sup>2</sup>.



#### EI - Integrity and Insulation

No flames, smoke, gas.  
No heat transfer.

## Technical data

Specification / Identification	Pyrobel 30 EG2
Glazing type	Single
Grade	internal, 2 sides UV filter
Glass thickness	37,5 mm
Thickness tolerances	± 3 mm
Dimensions tolerances	± 2 mm
Weight	ca 85 kg/m <sup>2</sup>
Minimum dimensions	No minimum
Light transmission / Light reflection (%)	80 / 7
CV* Light transmission / Light reflection (%)	86 / 8
U value (EN 673)	4,8 W/(m <sup>2</sup> .K)
Impact resistance (EN 12600)	1B1
Burglar resistance (EN 356)**	P2A
Sound reduction (EN 12758) Rw (C; Ctr)	44 (-1; -4) dB
Exposure temperatures	-40°C / +50°C

\* Clearvision (CV) optional, low iron extra clear glass by AGC.

\*\* The burglar resistance can be increased from P2A to P8B by laminating or assembling in IGU Pyrobel with Stratobel & Stratobel Security Burglary.

## Fire certification

Check out the product selector for availabilities of fire certification on [www.agc-pyrobel.com/selector](http://www.agc-pyrobel.com/selector). The installation must be done in compliance with the fire test report. Pyrobel(ite) is extensively tested & approved under different standards: EN, BS, UL, ASTM, NFPA,...

 **PYROBEL**

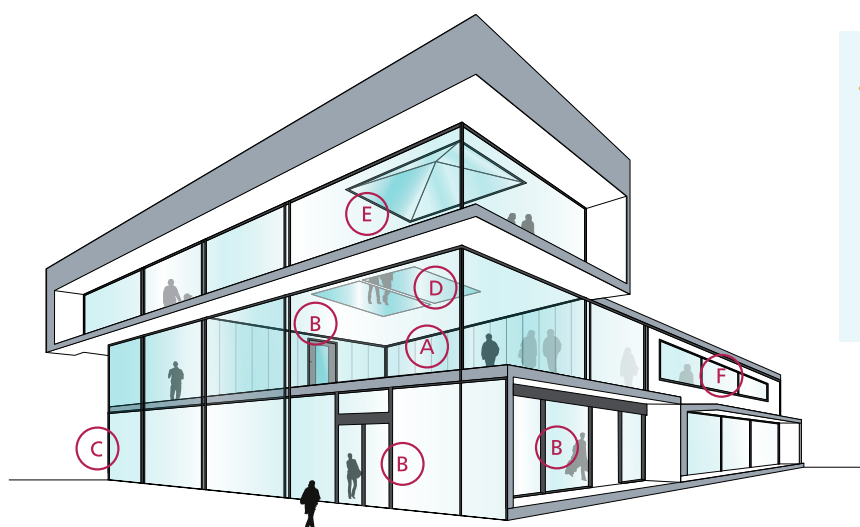
Your Dreams, Our Challenge

## Availability

- SGU** Single glazing unit for internal application
- IGU** Insulated glazing unit for outdoor applications (double or triple glazing)
- EG** External grade version Pyrobel EG is single glazed Pyrobel with a 0,76 mm pvb interlayer and extra glass pane that acts as an UV filter
- VL** Vision Line which is an all-glass butt-joint glazing system without mullions. Multiple fire-resistant panes of glass are interconnected by means of a 4-5 mm silicone joint. Separate technical data sheets are available for this range of products
- SPS** Special products and combinations such as bulletproof and burglar resistant glass

## Applications

The Pyrobel product range has been tested in a large variety of aluminium, steel, wood & butt-joint systems:





- A Fire-resistant all-glass partitions
- B Fire-resistant glazed doors
- C Fire-resistant curtain walls - facades
- D Fire-resistant floor glazing
- E Fire-resistant roof glazing
- F Fire resistant windows

## Why choose Pyrobel(ite)?



**THE SHORTEST DELIVERY TIMES**  
 Since Pyrobel(ite) **can be cut** by our network of distributors, they can supply you with what you need **quickly and efficiently**.



**ACOUSTIC INSULATION**  
 Pyrobel(ite) has excellent **acoustic insulation properties**.



**CRADLE TO CRADLE CERTIFIED**  
 Pyrobel(ite) is **Cradle to Cradle Certified™ Silver**.



**QUALITY**  
 With 40 years of experience, Pyrobel delivers proven long-term quality. Pyrobel(ite) glass has an excellent optical quality supported by a **10-year warranty**.



**PROVIDING SOLUTIONS**  
 We support our customers **with our high-level expertise**.



**MADE IN EUROPE**



The information and data contained in this document are subject to change without notice.  
 Questions? Contact our sales team! [www.agc-pyrobel.com/contact](http://www.agc-pyrobel.com/contact)





# PYROBEL 42

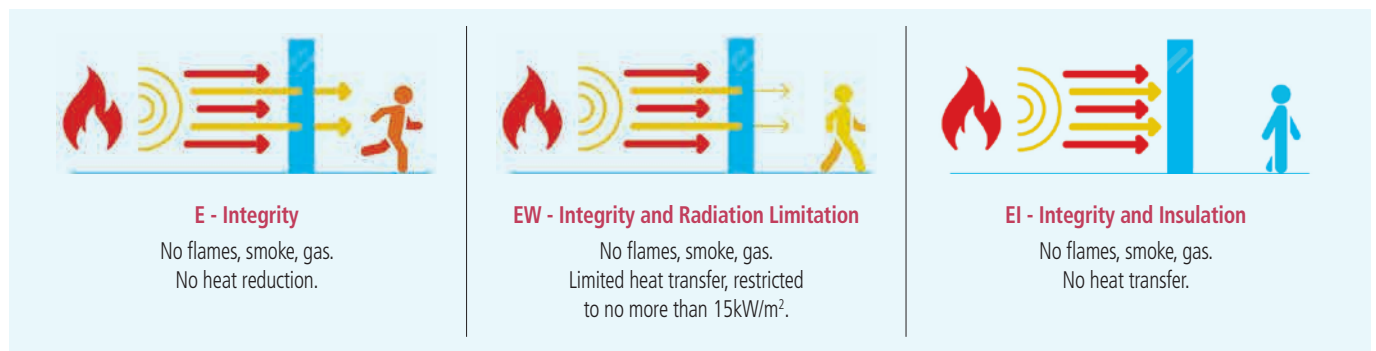
EI 90



Fire-resistant glass focusing on your safety



**Pyrobel 42** is a laminated glass assembled with sheets of glass and fire-resistant clear intumescent interlayers. In the event of fire, the interlayers transform into rigid and opaque fire shields, that keep out flames, limit the heat transfer through the glazing and reduce strongly the temperature on the protected surface of the Pyrobel glass. The glass delivers fire protection in both directions according to the standard EN 13501-2.



## Technical data

Specification / Identification	Pyrobel 42	Pyrobel 42 EG	Pyrobel 42 IGU
Glazing type	Single	Single	Double (or triple) Glazing Unit
Grade	Internal	Internal, 1 side UV filter	External with UV filter
Glass thickness	42,5 mm	46,0 mm	Consult the Glass Configurator: <a href="http://www.agc-younglass.com/configurator">www.agc-younglass.com/configurator</a>
Thickness tolerances	± 3 mm	± 3 mm	
Dimensions tolerances	± 2 mm	± 2 mm	
Weight	ca. 98 kg/m <sup>2</sup>	ca. 106 kg/m <sup>2</sup>	
Minimum dimensions	No minimum	No minimum	
Light transmission / Light reflection (%)	80 / 7	78 / 7	
CV* Light transmission / Light reflection (%)	5,8 W/(m <sup>2</sup> .K)	5,8 W/(m <sup>2</sup> .K)	
U value (EN 673)	1B1	1B1	
Impact resistance (EN 12600)	P2A	P2A	
Burglar resistance (EN 356)**	46 (-1; -5) dB	NPD	
Sound reduction (EN 12758) Rw (C; Ctr)	43 (0; -3) dB	43 (-1; -4) dB	

\* The burglar resistance can be increased from P2A to P8B by laminating or assembling in IGU Pyrobel with Stratobel & Stratobel Security Burglary.

## Fire certification

Check out the product selector for availabilities of fire certification on [www.agc-pyrobel.com/selector](http://www.agc-pyrobel.com/selector). The installation must be done in compliance with the fire test report. Pyrobel(ite) is extensively tested & approved under different standards: EN, BS, UL, ASTM, NFPA,...



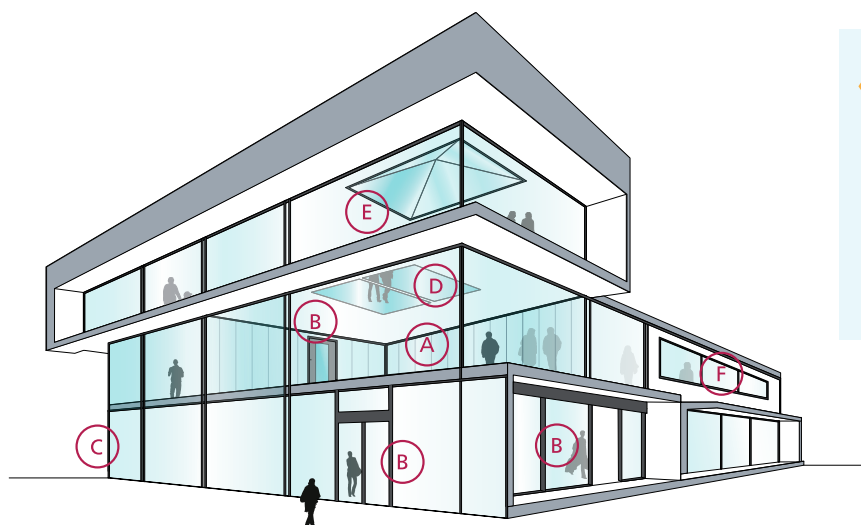
Your Dreams, Our Challenge

## Availability

- SGU** Single glazing unit for internal application
- IGU** Insulated glazing unit for outdoor applications (double or triple glazing)
- EG** External grade version Pyrobel EG is single glazed Pyrobel with a 0,76 mm pvb interlayer and extra glass pane that acts as an UV filter
- VL** Vision Line which is an all-glass butt-joint glazing system without mullions. Multiple fire-resistant panes of glass are interconnected by means of a 4-5 mm silicone joint. Separate technical data sheets are available for this range of products
- SPS** Special products and combinations such as bulletproof and burglar resistant glass

## Applications

The Pyrobel product range has been tested in a large variety of aluminium, steel, wood & butt-joint systems:



- A Fire-resistant all-glass partitions
- B Fire-resistant glazed doors
- C Fire-resistant curtain walls - facades
- D Fire-resistant floor glazing
- E Fire-resistant roof glazing
- F Fire resistant windows

## Why choose Pyrobel(ite)?



### THE SHORTEST DELIVERY TIMES

Since Pyrobel(ite) **can be cut** by our network of distributors, they can supply you with what you need **quickly and efficiently**.



### ACOUSTIC INSULATION

Pyrobel(ite) has excellent **acoustic insulation properties**.



### CRADLE TO CRADLE CERTIFIED

Pyrobel(ite) is **Cradle to Cradle Certified™ Silver**.



### QUALITY

With 40 years of experience, Pyrobel delivers proven long-term quality. Pyrobel(ite) glass has an excellent optical quality supported by a **10-year warranty**.



### PROVIDING SOLUTIONS

We support our customers **with our high-level expertise**.



### MADE IN EUROPE



The information and data contained in this document are subject to change without notice.  
 Questions? Contact our sales team! [www.agc-pyrobel.com/contact](http://www.agc-pyrobel.com/contact)



# PYROBEL 53N

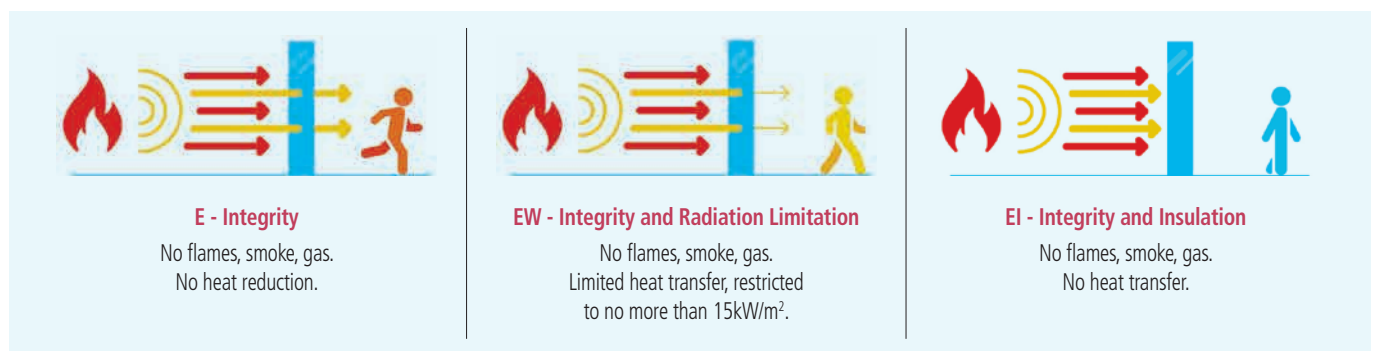
EI120



Fire-resistant glass focusing on your safety



**Pyrobel 53N** is a laminated glass assembled with sheets of glass and fire-resistant clear intumescent interlayers. In the event of fire, the interlayers transform into rigid and opaque fire shields, that keep out flames, limit the heat transfer through the glazing and reduce strongly the temperature on the protected surface of the Pyrobel glass. The glass delivers fire protection in both directions according to the standard EN 13501-2.



## Technical data

Specification / Identification	Pyrobel 53N	Pyrobel 53N EG	Pyrobel 53N IGU
Glazing type	Single	Single	Double (or triple) Glazing Unit
Grade	Internal	Internal, 1 side UV filter	External with UV filter
Glass thickness	52,7 mm	56,5 mm	Consult the Glass Configurator: <a href="http://www.agc-yourglass.com/configurator">www.agc-yourglass.com/configurator</a>
Thickness tolerances	± 3 mm	± 3 mm	
Dimensions tolerances	± 2 mm	± 2 mm	
Weight	ca 122 kg/m <sup>2</sup>	ca 130 kg/m <sup>2</sup>	
Minimum dimensions	No minimum	No minimum	
Light transmission / Light reflection (%)	75 / 7	73 / 7	
CV* Light transmission / Light reflection (%)	84 / 8	84 / 8	
U value (EN 673)	4,5 W/(m <sup>2</sup> .K)	4,4 W/(m <sup>2</sup> .K)	
Impact resistance (EN 12600)	1B1	1B1	
Burglar resistance (EN356)**	P2A	P2A	
Sound reduction (EN 12758) Rw (C; Ctr)	48 (-2; -7) dB	49 (-1; -6) dB	
Exposure temperatures		-40°C / +50°C	

\* Clearvision (CV) optional, low iron extra clear glass by AGC.

\*\* The burglar resistance can be increased from P2A to P8B by laminating or assembling in IGU Pyrobel with Stratobel & Stratobel Security Burglary.

## Fire certification

Check out the product selector for availabilities of fire certification on [www.agc-pyrobel.com/selector](http://www.agc-pyrobel.com/selector). The installation must be done in compliance with the fire test report. Pyrobel(ite) is extensively tested & approved under different standards: EN, BS, UL, ASTM, NFPA,...



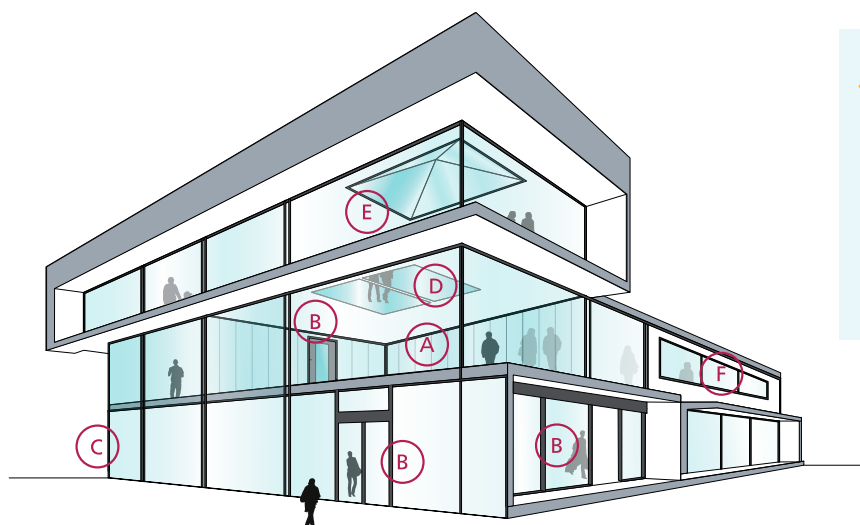
Your Dreams, Our Challenge

## Availability

- SGU** Single glazing unit for internal application
- IGU** Insulated glazing unit for outdoor applications (double or triple glazing)
- EG** External grade version Pyrobel EG is single glazed Pyrobel with a 0,76 mm pvb interlayer and extra glass pane that acts as an UV filter
- VL** Vision Line which is an all-glass butt-joint glazing system without mullions. Multiple fire-resistant panes of glass are interconnected by means of a 4-5 mm silicone joint. Separate technical data sheets are available for this range of products
- SPS** Special products and combinations such as bulletproof and burglar resistant glass

## Applications

The Pyrobel product range has been tested in a large variety of aluminium, steel, wood & butt-joint systems:



- A Fire-resistant all-glass partitions
- B Fire-resistant glazed doors
- C Fire-resistant curtain walls - facades
- D Fire-resistant floor glazing
- E Fire-resistant roof glazing
- F Fire resistant windows

## Why choose Pyrobel(ite)?



### THE SHORTEST DELIVERY TIMES

Since Pyrobel(ite) **can be cut** by our network of distributors, they can supply you with what you need **quickly and efficiently**.



### ACOUSTIC INSULATION

Pyrobel(ite) has excellent **acoustic insulation properties**.



### CRADLE TO CRADLE CERTIFIED

Pyrobel(ite) is **Cradle to Cradle Certified™ Silver**.



### QUALITY

With 40 years of experience, Pyrobel delivers proven long-term quality. Pyrobel(ite) glass has an excellent optical quality supported by a **10-year warranty**.



### PROVIDING SOLUTIONS

We support our customers **with our high-level expertise**.



### MADE IN EUROPE



The information and data contained in this document are subject to change without notice.  
 Questions? Contact our sales team! [www.agc-pyrobel.com/contact](http://www.agc-pyrobel.com/contact)



# PYROBEL 54

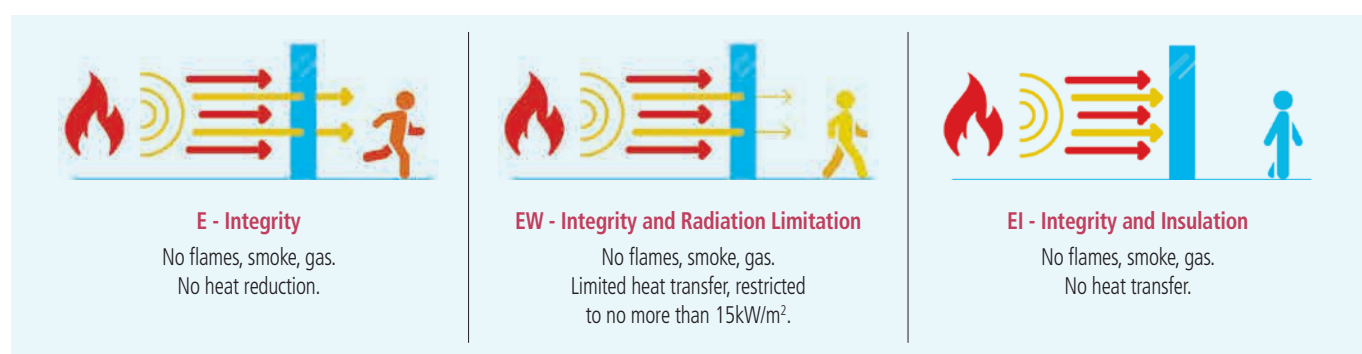
EI120

AGC

Fire-resistant glass focusing on your safety



**Pyrobel 54** is a laminated glass assembled with sheets of glass and fire-resistant clear intumescent interlayers. In the event of fire, the interlayers transform into rigid and opaque fire shields, that keep out flames, limit the heat transfer through the glazing and reduce strongly the temperature on the protected surface of the Pyrobel glass. The glass delivers fire protection in both directions according to the standard EN 13501-2.



## Technical data

Specification / Identification	Pyrobel 54	Pyrobel 54 EG	Pyrobel 54 IGU
Glazing type	Single	Single	Double (or triple) Glazing Unit
Grade	Internal	Internal, 1 side UV filter	External with UV filter
Glass thickness	54 mm	57,8 mm	Consult the Glass Configurator: <a href="http://www.agc-yourglass.com/configurator">www.agc-yourglass.com/configurator</a>
Thickness tolerances	± 3 mm	± 3 mm	
Dimensions tolerances	± 2 mm	± 2 mm	
Weight	ca 124 kg/m <sup>2</sup>	ca 132 kg/m <sup>2</sup>	
Minimum dimensions	No minimum	No minimum	
Light transmission / Light reflection (%)	75 / 7	74 / 7	
CV* Light transmission / Light reflection (%)	83 / 7	83 / 7	
U value (EN 673)	4,4 W/(m <sup>2</sup> .K)	4,4 W/(m <sup>2</sup> .K)	
Impact resistance (EN 12600)	1B1	1B1	
Burglar resistance (EN 356)**	P2A	P2A	
Sound reduction (EN 12758) Rw (C; Ctr)	49 (-1; -4) dB	49 (0; -3) dB	
Exposure temperatures		-40°C / +50°C	

\* Clearvision (CV) optional, low iron extra clear glass by AGC.

\*\* The burglar resistance can be increased from P2A to P8B by laminating or assembling in IGU Pyrobel with Stratobel & Stratobel Security Burglary.

## Fire certification

Check out the product selector for availabilities of fire certification on [www.agc-pyrobel.com/selector](http://www.agc-pyrobel.com/selector). The installation must be done in compliance with the fire test report. Pyrobel(ite) is extensively tested & approved under different standards: EN, BS, UL, ASTM, NFPA,...

 **PYROBEL**

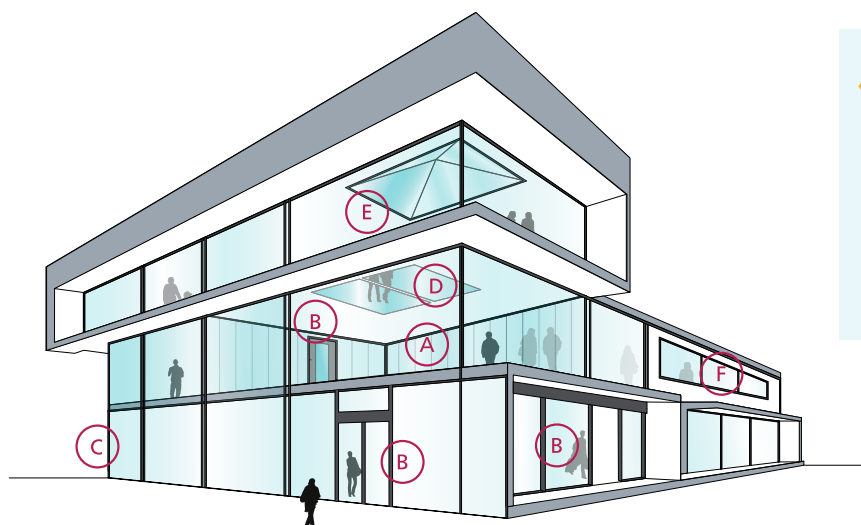
Your Dreams, Our Challenge

## Availability

- SGU** Single glazing unit for internal application
- IGU** Insulated glazing unit for outdoor applications (double or triple glazing)
- EG** External grade version Pyrobel EG is single glazed Pyrobel with a 0,76 mm pvb interlayer and extra glass pane that acts as an UV filter
- VL** Vision Line which is an all-glass butt-joint glazing system without mullions. Multiple fire-resistant panes of glass are interconnected by means of a 4-5 mm silicone joint. Separate technical data sheets are available for this range of products
- SPS** Special products and combinations such as bulletproof and burglar resistant glass

## Applications

The Pyrobel product range has been tested in a large variety of aluminium, steel, wood & butt-joint systems:





- A Fire-resistant all-glass partitions
- B Fire-resistant glazed doors
- C Fire-resistant curtain walls - facades
- D Fire-resistant floor glazing
- E Fire-resistant roof glazing
- F Fire resistant windows

## Why choose Pyrobel(ite)?



**THE SHORTEST DELIVERY TIMES**  
 Since Pyrobel(ite) **can be cut** by our network of distributors, they can supply you with what you need **quickly and efficiently**.



**ACOUSTIC INSULATION**  
 Pyrobel(ite) has excellent **acoustic insulation properties**.



**CRADLE TO CRADLE CERTIFIED**  
 Pyrobel(ite) is **Cradle to Cradle Certified™ Silver**.



**QUALITY**  
 With 40 years of experience, Pyrobel delivers proven long-term quality. Pyrobel(ite) glass has an excellent optical quality supported by a **10-year warranty**.



**PROVIDING SOLUTIONS**  
 We support our customers **with our high-level expertise**.



**MADE IN EUROPE**



The information and data contained in this document are subject to change without notice.  
 Questions? Contact our sales team! [www.agc-pyrobel.com/contact](http://www.agc-pyrobel.com/contact)





# PYROBEL 81

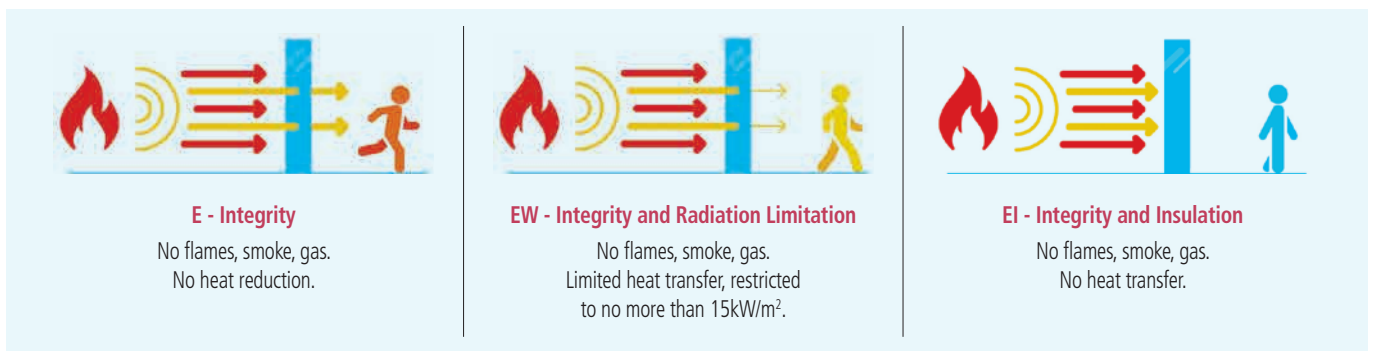
EI 180

AGC

Fire-resistant glass focusing on your safety



**Pyrobel 81** is a laminated glass assembled with sheets of glass and fire-resistant clear intumescent interlayers. In the event of fire, the interlayers transform into rigid and opaque fire shields, that keep out flames, limit the heat transfer through the glazing and reduce strongly the temperature on the protected surface of the Pyrobel glass. The glass delivers fire protection in both directions according to the standard EN 13501-2.



## Technical data

Specification / Identification	Pyrobel 81	Pyrobel 81 EG
Glazing type	Single	Single
Grade	Internal	Internal, 1 side UV filter
Glass thickness	81 mm	85 mm
Thickness tolerances	± 3 mm	± 3 mm
Dimensions tolerances	± 2 mm	± 2 mm
Weight	ca 187 kg/m <sup>2</sup>	ca 195 kg/m <sup>2</sup>
Minimum dimensions	No minimum	No minimum
Light transmission / Light reflection (%)	68 / 6	68 / 6
U value (EN 673)	4,0 (W/m <sup>2</sup> .K)	3,9 (W/m <sup>2</sup> .K)
Impact resistance (EN 12600)	1B1	1B1
Sound reduction (EN 12758) Rw (C; Ctr)	NPD*	NPD*
Exposure temperatures	-40°C / +50°C	

\* No performance declared, see Glass configurator.

## Fire certification

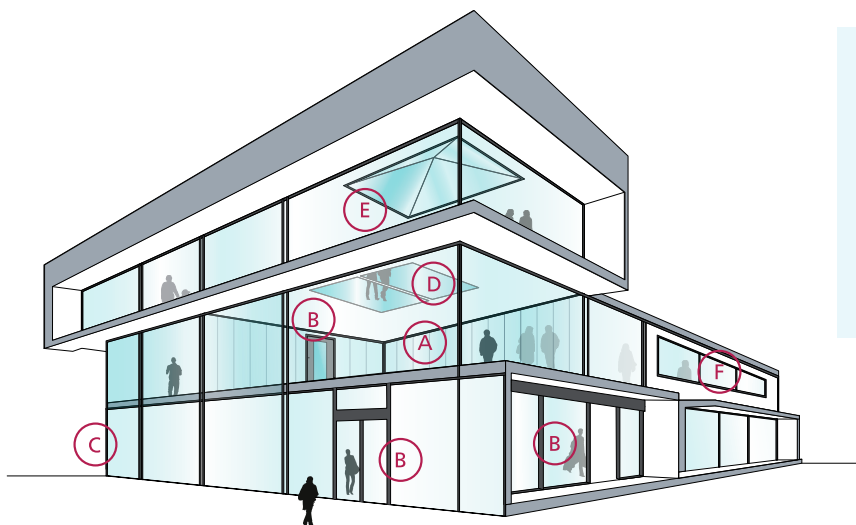
Check out the product selector for availabilities of fire certification on [www.agc-pyrobel.com/selector](http://www.agc-pyrobel.com/selector). The installation must be done in compliance with the fire test report. Pyrobel(ite) is extensively tested & approved under different standards: EN, BS, UL, ASTM, NFPA,...

## Availability

- SGU** Single glazing unit for internal application
- IGU** Insulated glazing unit for outdoor applications (double or triple glazing)
- EG** External grade version Pyrobel EG is single glazed Pyrobel with a 0,76 mm pvb interlayer and extra glass pane that acts as an UV filter
- VL** Vision Line which is an all-glass butt-joint glazing system without mullions. Multiple fire-resistant panes of glass are interconnected by means of a 4-5 mm silicone joint. Separate technical data sheets are available for this range of products
- SPS** Special products and combinations such as bulletproof and burglar resistant glass

## Applications

The Pyrobel product range has been tested in a large variety of aluminium, steel, wood & butt-joint systems:





- A Fire-resistant all-glass partitions
- B Fire-resistant glazed doors
- C Fire-resistant curtain walls - facades
- D Fire-resistant floor glazing
- E Fire-resistant roof glazing
- F Fire resistant windows

## Why choose Pyrobel(ite)?



**THE SHORTEST DELIVERY TIMES**  
 Since Pyrobel(ite) **can be cut** by our network of distributors, they can supply you with what you need **quickly and efficiently**.



**ACOUSTIC INSULATION**  
 Pyrobel(ite) has excellent **acoustic insulation properties**.



**CRADLE TO CRADLE CERTIFIED**  
 Pyrobel(ite) is **Cradle to Cradle Certified™ Silver**.



**QUALITY**  
 With 40 years of experience, Pyrobel delivers proven long-term quality. Pyrobel(ite) glass has an excellent optical quality supported by a **10-year warranty**.



**PROVIDING SOLUTIONS**  
 We support our customers **with our high-level expertise**.



**MADE IN EUROPE**



The information and data contained in this document are subject to change without notice.  
 Questions? Contact our sales team! [www.agc-pyrobel.com/contact](http://www.agc-pyrobel.com/contact)

