

# PYROBEL 16 VISION LINE

Fire-resistant glass focusing on your safety



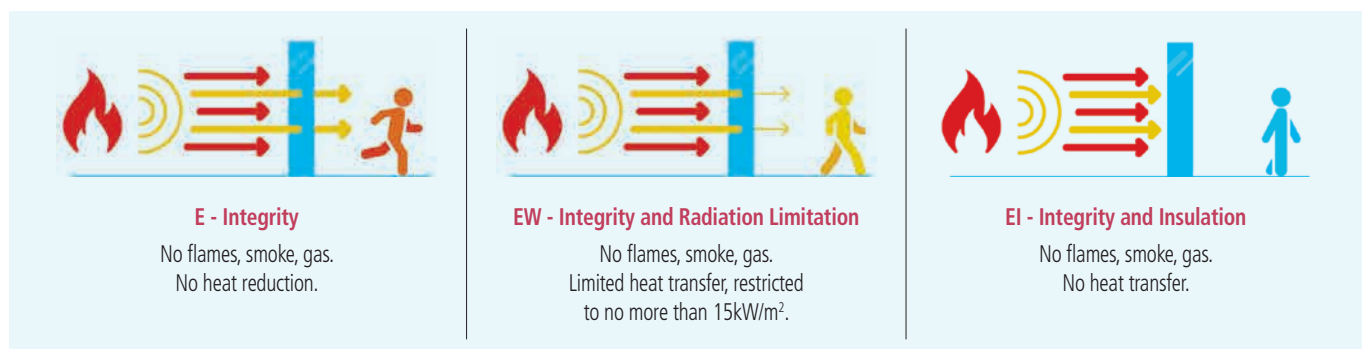
EI30

AGC



**Pyrobel 16 Vision Line (VL)** is a butt-joined system using multiple Pyrobel fire-resistant glass panes interconnected by means of a 4-5 mm silicone joint, which offers a maximum of light transparency. Pyrobel Vision Line delivers fire resistant, unbroken walls of glass that ensures a broad field of vision, making it the perfect choice for modern fully glazed partitions. The glass delivers fire protection in both directions according to the standard EN 13501-2.

**Pyrobel Vision Line Corner** is a version that allows glazing to be installed edge to edge with surfaces at angles ranging from 90° to 180°.



## Technical data

Specification / Identification	Pyrobel 16 VL	Pyrobel 16 EG (+6) VL	Pyrobel 16 EG2 VL
Glazing type	Single	Single	Single
Grade	Internal	Internal, 1 side UV filter	Internal, 2 sides UV filter
Glass thickness	17,3 mm	24,1 mm	24,8 mm
Thickness tolerances	± 1 mm	± 1,7 mm	± 1,7 mm
Dimensional tolerances	± 2 mm	± 2 mm	± 2 mm
Weight	ca 40 kg/m <sup>2</sup>	ca 55 kg/m <sup>2</sup>	ca 56 kg/m <sup>2</sup>
Minimum dimensions	No minimum	No minimum	No minimum
Light transmission / Light reflection (%)	85 / 8	83 / 7	81 / 7
CV* Light transmission / Light reflection (%)	89 / 8	89 / 8	NPD***
U value (EN 673)	5,3 W/(m <sup>2</sup> .K)	5,1 W/(m <sup>2</sup> .K)	5,0 W/(m <sup>2</sup> .K)
Impact resistance (EN 12600)	2B2	1B1	1B1
Burglar resistance (EN 356)**	P1A	P2A	NPD***
Sound reduction (EN 12758) Rw (C; Ctr)	40 (-1; -3) dB	41 (-1; -3) dB	40 (-1; -3) dB
Exposure temperatures		-40°C / +50°C	

\* Clearvision (CV) optional, low iron extra clear glass by AGC.

\*\* The burglar resistance can be increased from P1A to P8B by laminating or assembling in IGU Pyrobel with Stratobel & Stratobel Security Burglary.

\*\*\* No performance declared, see Glass configurator.

## Fire certification

Check out the product selector for availabilities of fire certification on [www.agc-pyrobel.com/selector](http://www.agc-pyrobel.com/selector). The installation must be done in compliance with the fire test report. Pyrobel(ite) is extensively tested & approved under different standards: EN, BS, UL, ASTM, NFPA, ...

## Availability

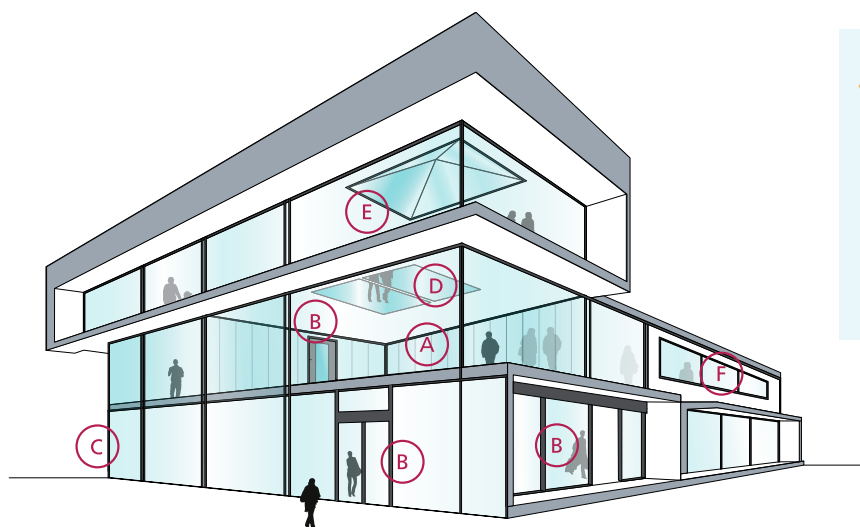
**SGU** Single glazing unit for internal application

**EG** External grade version Pyrobel EG is single glazed Pyrobel with a 0,76 mm pvb interlayer and extra glass pane that acts as an UV filter

**VL** Vision Line which is an all-glass butt-joint glazing system without mullions

## Applications

The Pyrobel product range has been tested in a large variety of aluminium, steel, wood & butt-joint systems:



- A Fire-resistant all-glass partitions
- B Fire-resistant glazed doors
- C Fire-resistant curtain walls - facades
- D Fire-resistant floor glazing
- E Fire-resistant roof glazing
- F Fire resistant windows

## Why choose Pyrobel Vision Line?



### AESTHETICS

The **modern and stylish** Pyrobel Vision Line system meets the needs of designers and architects looking for **glazed solutions without mullions**, also available in large dimensions.



### COMFORT

An **unrivalled light transmission** and an **optimal acoustic insulation** for maximal comfort.



### SAFETY

Pyrobel Vision Line is made of **safety glass** according to EN 12600. The glass is fire-resistant on **both sides**.



### QUALITY

With 40 years of experience, Pyrobel Vision Line delivers proven long-term quality.



### PROVIDING SOLUTIONS

We support our customers **with our high-level expertise**.



### MADE IN EUROPE



The information and data contained in this document are subject to change without notice.

Questions? Contact our sales team! [www.agc-pyrobel.com/contact](http://www.agc-pyrobel.com/contact)



# PYROBEL 25 VISION LINE

Fire-resistant glass focusing on your safety



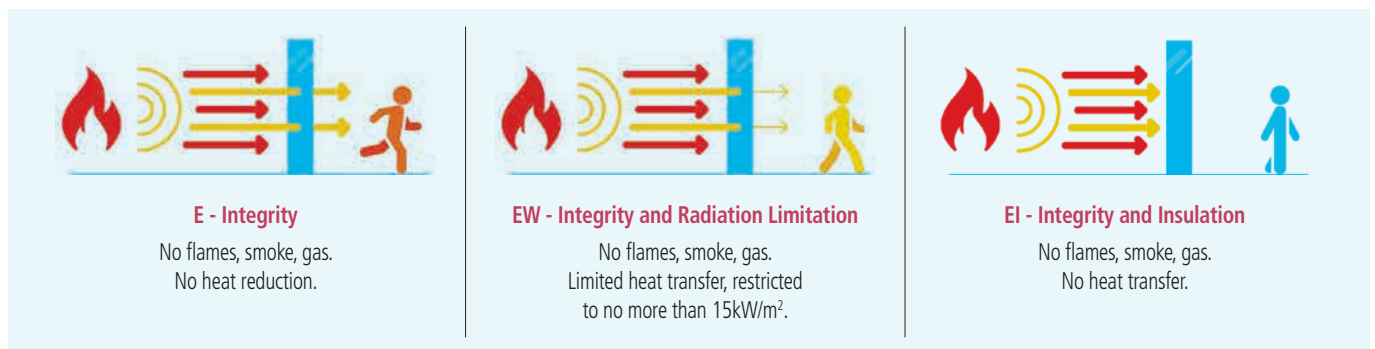
EI60

AGC



**Pyrobel 25 Vision Line (VL)** is a butt-joined system using multiple Pyrobel fire-resistant glass panes interconnected by means of a 4-5 mm silicone joint, which offers a maximum of light transparency. Pyrobel Vision Line delivers fire-resistant, unbroken walls of glass that ensures a broad field of vision, making it the perfect choice for modern fully glazed partitions. The glass delivers fire protection in both directions according to the standard EN 13501-2.

**Pyrobel Vision Line Corner** is a version that allows glazing to be installed edge to edge with surfaces at angles ranging from 90° to 180°.



## Technical data

Specification / Identification	Pyrobel 25 VL	Pyrobel 25 EG VL	Pyrobel 25 EG2 VL
Glazing type	Single	Single	Single
Grade	Internal	Internal, 1 side UV filter	Internal, 2 sides UV filter
Glass thickness	26,6 mm	30,4 mm	34,1 mm
Thickness tolerances	± 2 mm	± 2 mm	± 2,4 mm
Dimensions tolerances	± 2 mm	± 2 mm	± 2 mm
Weight	ca 60 kg/m <sup>2</sup>	ca 68 kg/m <sup>2</sup>	ca 76 kg/m <sup>2</sup>
Minimum dimensions	No minimum	No minimum	No minimum
Light transmission / Light reflection (%)	82 / 7	82 / 7	78 / 7
CV* Light transmission / Light reflection (%)	88 / 8	87 / 8	87 / 8
U value (EN 673)	5,1 W/(m <sup>2</sup> .K)	5,0 W/(m <sup>2</sup> .K)	4,8 W/(m <sup>2</sup> .K)
Impact resistance (EN 12600)	1B1	1B1	1B1
Burglar resistance (EN 356)	P1A	P2A	NPD**
Sound reduction (EN 12758) Rw (C; Ctr)	43 (0; -3) dB	43 (-1; -4) dB	44 (-1; -4) dB
Exposure temperatures		-40°C / +50°C	

\* Clearvision (CV) optional, low iron extra clear glass by AGC.

\*\* No performance declared, see Glass configurator.

## Fire certification

Check out the product selector for availabilities of fire certification on [www.agc-pyrobel.com/selector](http://www.agc-pyrobel.com/selector). The installation must be done in compliance with the fire test report. Pyrobel(ite) is extensively tested & approved under different standards: EN, BS, UL, ASTM, NFPA, ...



Your Dreams, Our Challenge

## Availability

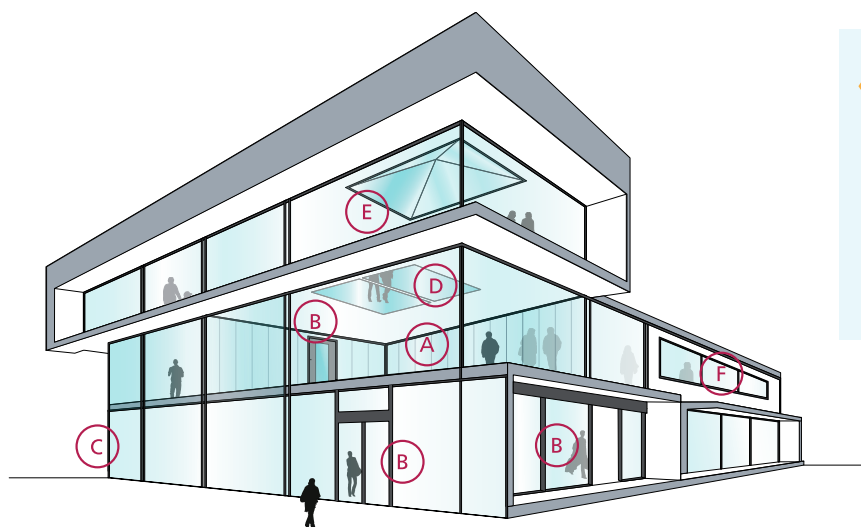
**SGU** Single glazing unit for internal application

**EG** External grade version Pyrobel EG is single glazed Pyrobel with a 0,76 mm pvb interlayer and extra glass pane that acts as an UV filter

**VL** Vision Line which is an all-glass butt-joint glazing system without mullions

## Applications

The Pyrobel product range has been tested in a large variety of aluminium, steel, wood & butt-joint systems:



- A Fire-resistant all-glass partitions
- B Fire-resistant glazed doors
- C Fire-resistant curtain walls - facades
- D Fire-resistant floor glazing
- E Fire-resistant roof glazing
- F Fire resistant windows

## Why choose Pyrobel Vision Line?



### AESTHETICS

The **modern and stylish** Pyrobel Vision Line system meets the needs of designers and architects looking for **glazed solutions without mullions**, also available in large dimensions.



### COMFORT

An **unrivalled light transmission** and an **optimal acoustic insulation** for maximal comfort.



### SAFETY

Pyrobel Vision Line is made of **safety glass** according to EN 12600. The glass is fire-resistant on **both sides**.



### QUALITY

With 40 years of experience, Pyrobel Vision Line delivers proven long-term quality.



### PROVIDING SOLUTIONS

We support our customers **with our high-level expertise**.



### MADE IN EUROPE



The information and data contained in this document are subject to change without notice.

Questions? Contact our sales team! [www.agc-pyrobel.com/contact](http://www.agc-pyrobel.com/contact)



# PYROBEL 30 EG2 VISION LINE

EI90

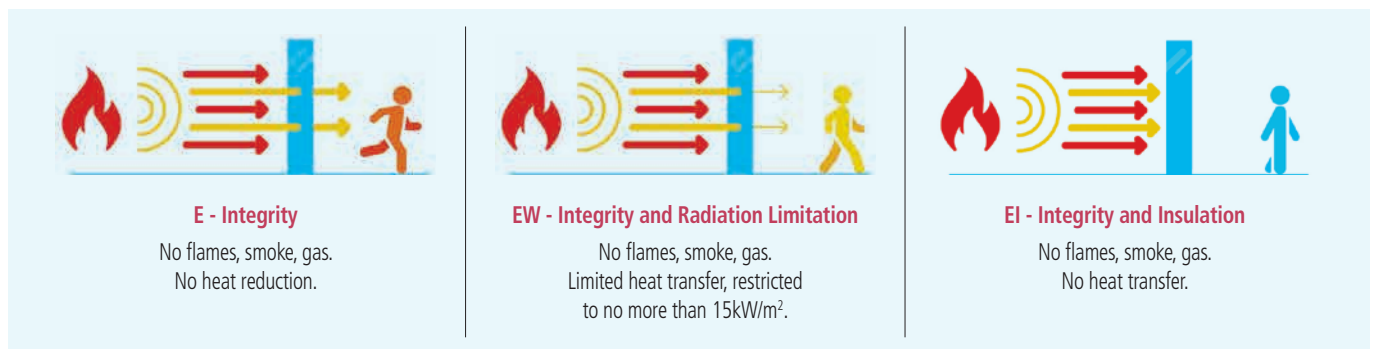
AGC

Fire-resistant glass focusing  
on your safety



**Pyrobel 30 EG2 Vision Line (VL)** is a butt-joined system using multiple Pyrobel fire-resistant glass panes interconnected by means of a 4-5 mm silicone joint, which offers a maximum of light transparency. Pyrobel Vision Line delivers fire-resistant, unbroken walls of glass that ensures a broad field of vision, making it the perfect choice for modern fully glazed partitions. The glass delivers fire protection in both directions according to the standard EN 13501-2.

**Pyrobel Vision Line Corner** is a version that allows glazing to be installed edge to edge with surfaces at angles ranging from 90° to 180°.



## Technical data

Specification / Identification	Pyrobel 30 EG2 VL
Glazing type	Single
Grade	internal, 2 sides UV filter
Glass thickness	37,5 mm
Thickness tolerances	± 3 mm
Dimensions tolerances	± 2 mm
Weight	ca 85 kg/m <sup>2</sup>
Minimum dimensions	No minimum
Light transmission / Light reflection (%)	80 / 7
CV* Light transmission / Light reflection (%)	86 / 8
U value (EN 673)	4,8 W/(m <sup>2</sup> .K)
Impact resistance (EN 12600)	1B1
Burglar resistance (EN 356)	P2A
Sound reduction (EN 12758) Rw (C; Ctr)	44 (-1; -4) dB
Exposure temperatures	-40°C / +50°C

\* Clearvision (CV) optional, low iron extra clear glass by AGC.

## Fire certification

Check out the product selector for availabilities of fire certification on [www.agc-pyrobel.com/selector](http://www.agc-pyrobel.com/selector). The installation must be done in compliance with the fire test report. Pyrobel(ite) is extensively tested & approved under different standards: EN, BS, UL, ASTM, NFPA, ...



Your Dreams, Our Challenge

## Availability

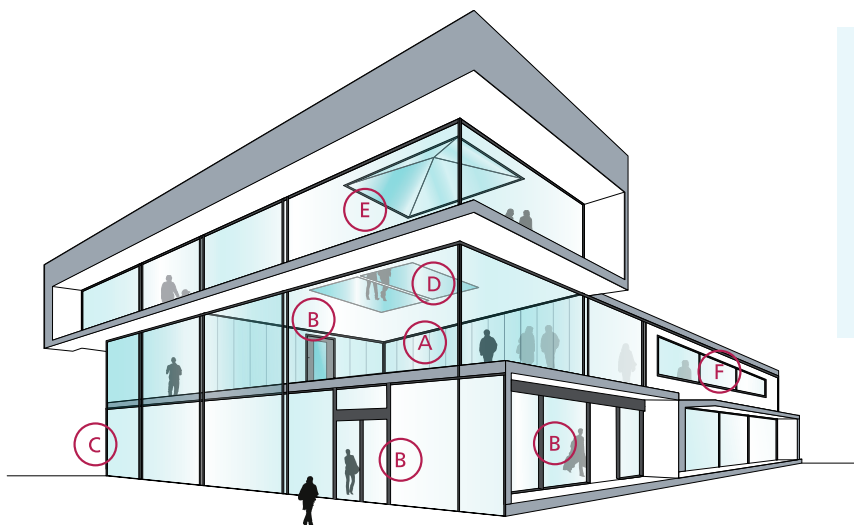
**SGU** Single glazing unit for internal application

**EG** External grade version Pyrobel EG is single glazed Pyrobel with a 0,76 mm pvb interlayer and extra glass pane that acts as an UV filter

**VL** Vision Line which is an all-glass butt-joint glazing system without mullions

## Applications

The Pyrobel product range has been tested in a large variety of aluminium, steel, wood & butt-joint systems:



- A Fire-resistant all-glass partitions
- B Fire-resistant glazed doors
- C Fire-resistant curtain walls - facades
- D Fire-resistant floor glazing
- E Fire-resistant roof glazing
- F Fire resistant windows

## Why choose Pyrobel Vision Line?



### AESTHETICS

The **modern and stylish** Pyrobel Vision Line system meets the needs of designers and architects looking for **glazed solutions without mullions**, also available in large dimensions.



### COMFORT

An **unrivalled light transmission** and an **optimal acoustic insulation** for maximal comfort.



### SAFETY

Pyrobel Vision Line is made of **safety glass** according to EN 12600. The glass is fire-resistant on **both sides**.



### QUALITY

With 40 years of experience, Pyrobel Vision Line delivers proven long-term quality.



### PROVIDING SOLUTIONS

We support our customers **with our high-level expertise**.



### MADE IN EUROPE



The information and data contained in this document are subject to change without notice.

Questions? Contact our sales team! [www.agc-pyrobel.com/contact](http://www.agc-pyrobel.com/contact)



# PYROBEL 53N VISION LINE

Fire-resistant glass focusing  
on your safety

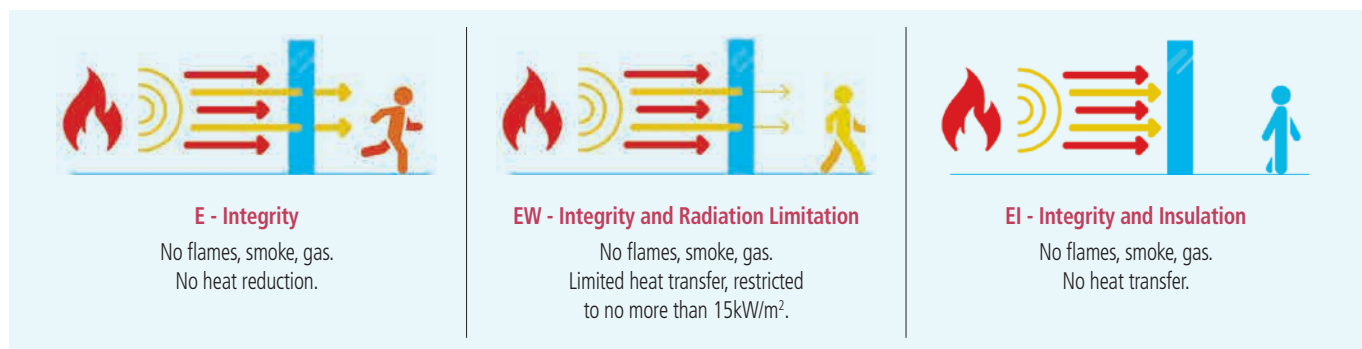


EI120

**AGC**

**Pyrobel 53N Vision Line (VL)** is a butt-joined system using multiple Pyrobel fire-resistant glass panes interconnected by means of a 4-5 mm silicone joint, which offers a maximum of light transparency. Pyrobel Vision Line delivers fire-resistant, unbroken walls of glass that ensures a broad field of vision, making it the perfect choice for modern fully glazed partitions. The glass delivers fire protection in both directions according to the standard EN 13501-2.

**Pyrobel Vision Line Corner** is a version that allows glazing to be installed edge to edge with surfaces at angles ranging from 90° to 180°.



## Technical data

Specification / Identification	Pyrobel 53N VL
Glazing type	Single
Grade	Internal
Glass thickness	52,7 mm
Thickness tolerances	± 3 mm
Dimensions tolerances	± 2 mm
Weight	ca 122 kg/m <sup>2</sup>
Minimum dimensions	No minimum
Light transmission / Light reflection (%)	75 / 7
CV* Light transmission / Light reflection (%)	84 / 8
U value (EN 673)	4,5 W/(m <sup>2</sup> .K)
Impact resistance (EN 12600)	1B1
Burglar resistance (EN356)	P2A
Sound reduction (EN 12758) Rw (C; Ctr)	48 (-2; -7) dB
Exposure temperatures	-40°C / +50°C

\* Clearvision (CV) optional, low iron extra clear glass by AGC.

## Fire certification

Check out the product selector for availabilities of fire certification on [www.agc-pyrobel.com/selector](http://www.agc-pyrobel.com/selector). The installation must be done in compliance with the fire test report. Pyrobel(ite) is extensively tested & approved under different standards: EN, BS, UL, ASTM, NFPA, ...



Your Dreams, Our Challenge

## Availability

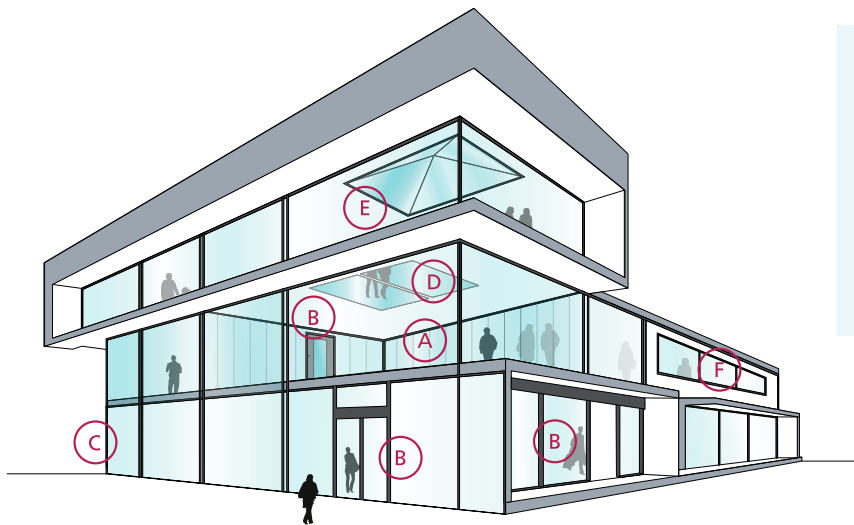
**SGU** Single glazing unit for internal application

**EG** External grade version Pyrobel EG is single glazed Pyrobel with a 0,76 mm pvb interlayer and extra glass pane that acts as an UV filter

**VL** Vision Line which is an all-glass butt-joint glazing system without mullions

## Applications

The Pyrobel product range has been tested in a large variety of aluminium, steel, wood & butt-joint systems:



- A Fire-resistant all-glass partitions
- B Fire-resistant glazed doors
- C Fire-resistant curtain walls - facades
- D Fire-resistant floor glazing
- E Fire-resistant roof glazing
- F Fire resistant windows

## Why choose Pyrobel Vision Line?



### AESTHETICS

The **modern and stylish** Pyrobel Vision Line system meets the needs of designers and architects looking for **glazed solutions without mullions**, also available in large dimensions.



### SAFETY

Pyrobel Vision Line is made of **safety glass** according to EN 12600. The glass is fire-resistant on **both sides**.



### PROVIDING SOLUTIONS

We support our customers **with our high-level expertise**.



### COMFORT

An **unrivalled light transmission** and an **optimal acoustic insulation** for maximal comfort.



### QUALITY

With 40 years of experience, Pyrobel Vision Line delivers proven long-term quality.



### MADE IN EUROPE



The information and data contained in this document are subject to change without notice.

Questions? Contact our sales team! [www.agc-pyrobel.com/contact](http://www.agc-pyrobel.com/contact)





# PYROBEL 54 VISION LINE

Fire-resistant glass focusing on your safety

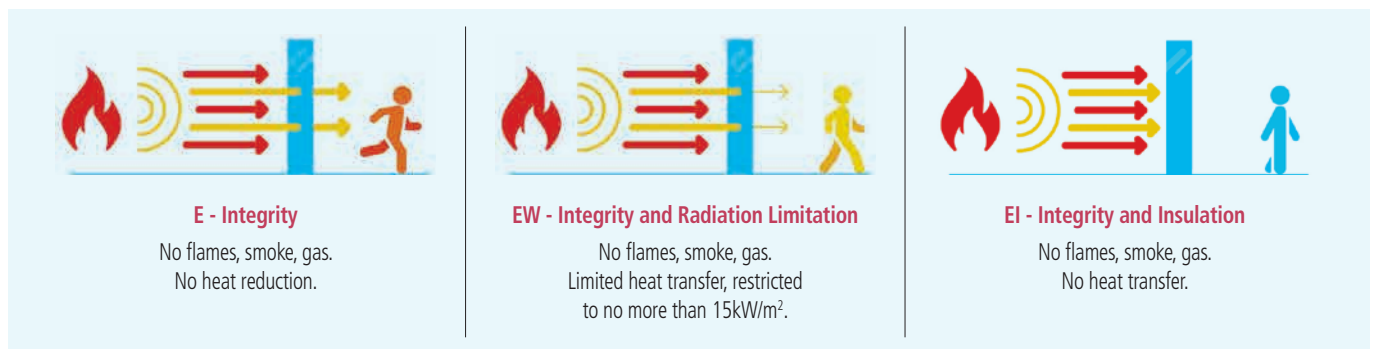


EI120

AGC

**Pyrobel 54 Vision Line (VL)** is a butt-joined system using multiple Pyrobel fire-resistant glass panes interconnected by means of a 4-5 mm silicone joint, which offers a maximum of light transparency. Pyrobel Vision Line delivers fire-resistant, unbroken walls of glass that ensures a broad field of vision, making it the perfect choice for modern fully glazed partitions. The glass delivers fire protection in both directions according to the standard EN 13501-2.

**Pyrobel Vision Line Corner** is a version that allows glazing to be installed edge to edge with surfaces at angles ranging from 90° to 180°.



## Technical data

Specification / Identification	Pyrobel 54 VL
Glazing type	Single
Grade	Internal
Glass thickness	54 mm
Thickness tolerances	± 3 mm
Dimensions tolerances	± 2 mm
Weight	ca 124 kg/m <sup>2</sup>
Minimum dimensions	No minimum
Light transmission / Light reflection (%)	75 / 7
CV* Light transmission / Light reflection (%)	83 / 7
U value (EN 673)	4,4 W/(m <sup>2</sup> .K)
Impact resistance (EN 12600)	1B1
Burglar resistance (EN 356)	P2A
Sound reduction (EN 12758) Rw (C; Ctr)	49 (-1; -4)
Exposure temperatures	-40°C / +50°C

\* Clearvision (CV) optional, low iron extra clear glass by AGC.

## Fire certification

Check out the product selector for availabilities of fire certification on [www.agc-pyrobel.com/selector](http://www.agc-pyrobel.com/selector). The installation must be done in compliance with the fire test report. Pyrobel(ite) is extensively tested & approved under different standards: EN, BS, UL, ASTM, NFPA, ...



Your Dreams, Our Challenge

## Availability

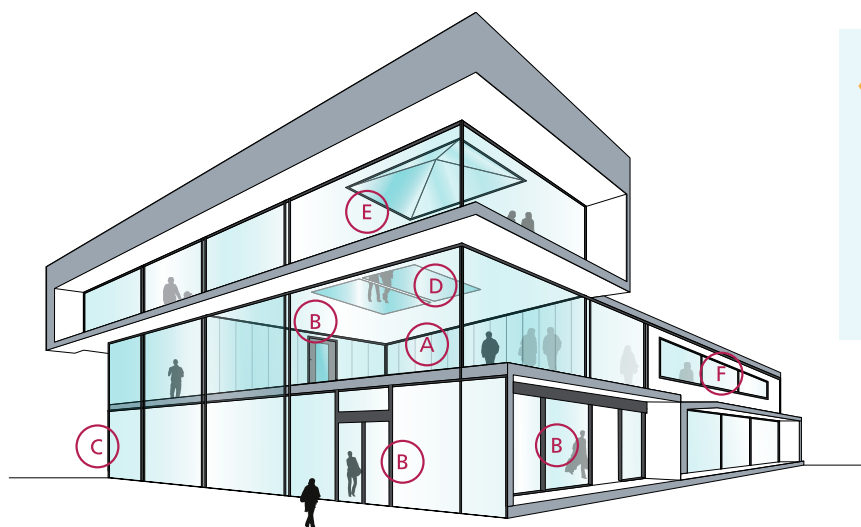
**SGU** Single glazing unit for internal application

**EG** External grade version Pyrobel EG is single glazed Pyrobel with a 0,76 mm pvb interlayer and extra glass pane that acts as an UV filter

**VL** Vision Line which is an all-glass butt-joint glazing system without mullions

## Applications

The Pyrobel product range has been tested in a large variety of aluminium, steel, wood & butt-joint systems:



- A Fire-resistant all-glass partitions
- B Fire-resistant glazed doors
- C Fire-resistant curtain walls - facades
- D Fire-resistant floor glazing
- E Fire-resistant roof glazing
- F Fire resistant windows

## Why choose Pyrobel Vision Line?



### AESTHETICS

The **modern and stylish** Pyrobel Vision Line system meets the needs of designers and architects looking for **glazed solutions without mullions**, also available in large dimensions.



### COMFORT

An **unrivalled light transmission** and an **optimal acoustic insulation** for maximal comfort.



### SAFETY

Pyrobel Vision Line is made of **safety glass** according to EN 12600. The glass is fire-resistant on **both sides**.



### QUALITY

With 40 years of experience, Pyrobel Vision Line delivers proven long-term quality.



### PROVIDING SOLUTIONS

We support our customers **with our high-level expertise**.



### MADE IN EUROPE



The information and data contained in this document are subject to change without notice.

Questions? Contact our sales team! [www.agc-pyrobel.com/contact](http://www.agc-pyrobel.com/contact)

